

*MONITORING, DATA LOGGING AND  
CONTROL SYSTEM  
MS5, MS5D*

INSTRUCTION MANUAL  
Basic Part



**CONTENT:****page**

INSTRUCTION MANUAL.....	1
INTRODUCTION .....	3
1. GENERAL SAFETY PRECAUTIONS .....	5
2. WIZARD for INSTALLATION and CONFIGURATION of DATA LOGGER.....	5
3. RULES for MOUNTING and CONNECTION of DATA LOGGER .....	7
3.1. Mechanical location of data logger and the way of cable routing.....	7
3.2. Data logger interface connectors .....	11
3.3. Mounting and connection of output relays module MP018 .....	13
3.4. Mounting and connection of external terminal with display.....	14
3.5. Connection of data logger to the computer .....	14
3.6. Wiring of data logger with supported SMS messages.....	19
3.7. Connection of data logger to power .....	20
4. USER PROGRAM and CONFIGURATION OF DATA LOGGER .....	20
4.1. Program features.....	20
4.2. Installation of program .....	20
4.3. Setting of communication with data logger .....	20
4.4. Basic items in menu program .....	25
5. DESCRIPTION of CONFIGURATION and DATA LOGGER MODES .....	26
5.1. Bookmark <i>Common</i> .....	26
5.2. Bookmark <i>Communication</i> .....	27
5.3. Bookmark <i>Profile</i> .....	27
5.4. Bookmark <i>Ch.. Identity &amp; Calculations</i> .....	28
5.5. Bookmark <i>Ch.. Measuring &amp; recording</i> .....	29
5.6. Bookmark <i>Ch..Conditions</i> .....	31
5.7. Bookmark <i>Ch..Alarms and indication</i> .....	36
6. CONTROL and INDICATION COMPONENTS of DATA LOGGER.....	38
7. APPLICATION NOTES.....	43
7.1. <i>Processes and how to work with</i> .....	43
7.2. <i>Configuration Profiles and how to work with</i> .....	44
7.3. <i>SMS message and how to work with</i> .....	44
7.4. <i>Possibilities of setting Logging interval</i> .....	44
7.5. <i>Identification of person, who deactivated alarm</i> .....	45
7.6. <i>Way of entering PIN code from data logger keyboard</i> .....	45
7.7. <i>Sharing of Display mode on several computers together with automatic storing of data on network</i> .....	45
7.8. <i>How to ensure alarm report, in case of power failure</i> .....	46
7.9. <i>Back-up of data logger configuration and its restoring</i> .....	46
7.10. <i>Other possibilities in data logger configuration</i> .....	46
7.11. <i>What to do if data logger does not work</i> .....	46
7.12. <i>Self test error</i> .....	46
7.13. <i>Problems with correct measurement</i> .....	46
7.14. <i>Problems in communication with computer</i> .....	47
8. RECOMMENDATION FOR OPERATION AND MAINTENANCE.....	48
9. TECHNICAL DESCRIPTION AND PARAMETERS OF DATA LOGGER .....	50

*Note: Manual Appendixes are available in electronic pdf format.*

## **INTRODUCTION**

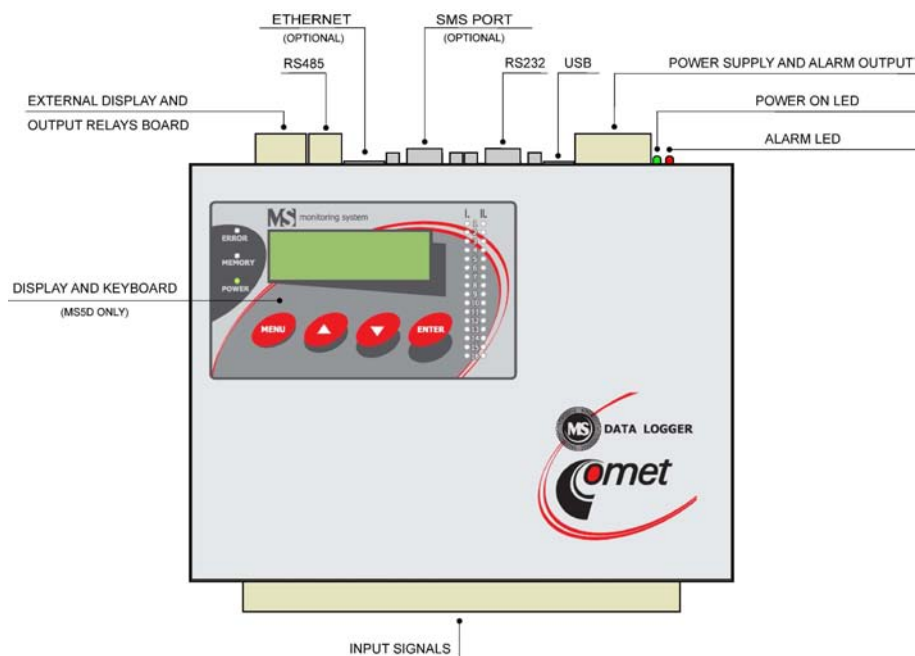
Data loggers are designed for measurement, record, evaluation and consequent processing of input electrical signals, characterized by relatively slow changes ( $>1s$ ). Together with proper transmitters and transducers are suitable for monitoring of physical values.

Device enables:

- to measure and process 1 to 16 input signals
- to acquire autonomous time record of measured values
- create alarm states
- to perform other actions based on created alarms (audible, visual indication, controlling of relay outputs, sending SMS message, controlling of telephone dialer etc.)
- to monitor on-line measured values and states

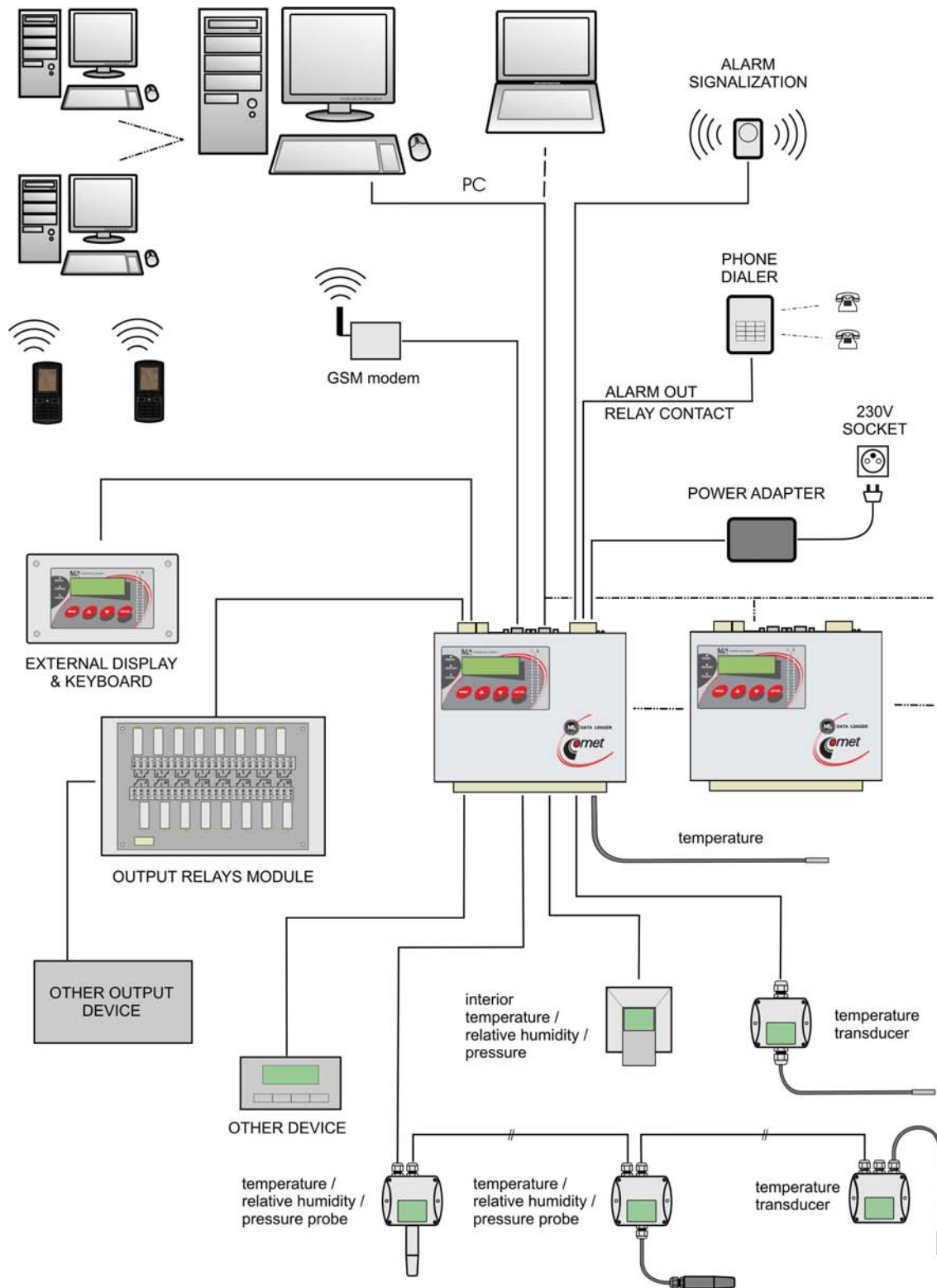
The basic model is data logger MS5. Data logger MS5D is equipped on the top of it with and display and simple keyboard.

*Drawing (MS5D):*



*Items marked Accessory are not included in delivery and it is necessary to order separately.*

Architecture of measuring system with data logger MS5:



## **1. GENERAL SAFETY PRECAUTIONS**



The following list of precautions serves to reduce risk of injury or damage of described instrument. To prevent injuries use instrument accordingly with rules in this manual.

- Follow rules specified in part [Not allowed manipulations and notice](#)
- **Service should be performed only by qualified person.**
- **Use suitable power source.** Use only source with power voltage recommended by the manufacturer and approved in accordance with proper standards. Pay attention, the source has undamaged cables or cover.
- **Connect and disconnect correctly.** Do not connect and disconnect cables, if device is under electrical voltage.
- **Do not use instrument without covers.**
- **Do not use instrument, if it does not work correctly.** If you mean instrument does not correctly, let it check by qualified service person.
- Do not use instrument in environment with danger of explosion.

## **2. WIZARD for INSTALLATION and CONFIGURATION of DATA LOGGER**

### **2.1.1 Mounting of data logger and its accessory**

- **Select suitable location for placing data logger** – pay attention to parameters of ambient environment, minimize the number of cables, avoid sources of interference
- **Mounting of sensors and routing of cables** – pay attention to rules of their installation, use recommended working positions, avoid devices and distribution of power electricity
- **Check proper connection** – before first switching on. If data logger controls other actuating devices of regulation, it is recommended to put them out of operation before configuration of data logger.

*Detailed rules for mounting of data logger including different ways of connection to the computer are described in chapter [RULES for MOUNTING and CONNECTION DATA LOGGER](#).*

### **2.1.2 Basic activation of data logger**

- **Connection of data logger to power** - connect data logger to power and visually check its function (indication of power, optionally the display and keyboard)
- **Installation of software** - install user program to the PC (see part [PROGRAM for DATA LOGGER](#))

**Configuration of data logger communication with computer** – in user SW in part Configuration-Setting of communication configure and test the data logger connection to computer. Detailed description of Setting of communication interface is in chapter [RULES for MOUNTING and CONNECTION of DATA LOGGER](#).

*Program enables to work simultaneously with several data loggers, that are connected to the computer in different ways.*

**2.1.3 Configuration of data logger** – read and change the data logger configuration by means of the SW in part Configuration – Configuration of data logger (icon i). Detailed description of data logger configuration is in part [DESCRIPTION of CONFIGURATION and MODES of DATA LOGGER](#).

- set data logger Name, Date and Time in data logger

- assign names to each measured point and optimize the display for your requirements (signal conversions, decimal point position etc.)
- switch on each input channel needed and set record function:
  - on channels where recorded value with fixed interval is required, use Continuous record with fixed interval.
  - if record with fixed interval only under certain conditions is required, use Conditional record.
  - if only values and time under defined conditions are required, use Sampled record
  - each type of record can be limited in time
  - different record modes can be combined
- if needed set alarm functions
  - first define conditions for consequent actions
  - assign to each alarm conditions for creation of alarm
  - assign to each alarm actions to be performed in alarm creation (lightening of LED diode on data logger panel, activation of ALARM OUT output, activation of audible indication, sending SMS message, sending e-mail etc.)
  - maximum four conditions and two different alarm actions on one channel can be defined; if there is a need for one channel to link several alarms (maximum four), it is enabled to use available alarms from different channels
  - activity of output ALARM-OUT can be cancel by the user directly from data logger or remotely, at the same time it is possible to record it (including information on way of canceling)
  - changes of state for each alarms can be recorded separately
- if there is a need during data logger operation to describe from its keyboard parts of record with predefined notes, it is enabled by means of Processes.
- if there is a need during data logger operation to change entire data logger configuration from its keyboard, it is enabled by means of storing several configuration Profiles.
- if it is required to secure data transfer and access to data logger and program functions, system of passwords and access rights can be used

#### **2.1.4 Usual work with data logger**

- reading, viewing, archiving and print/export recorded data from selected data logger or from file on disk
- on-line viewing of measured values – Display mode, enables to watch simultaneously all connected data loggers
- Display mode can be shared simultaneously on several computers in the network

Instructions for regular check and maintenance of data logger are specified in part [RECOMMENDATIONS for OPERATION and MAINTENANCE](#).

### **3.RULES for MOUNTING and CONNECTION of DATA LOGGER**

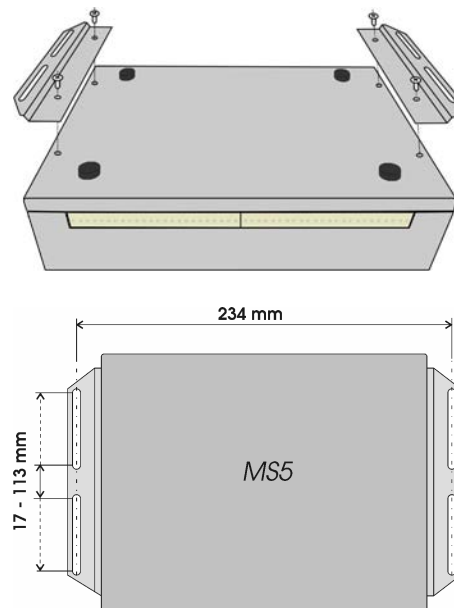
#### **3.1. Mechanical location of data logger and the way of cable routing**

Location of data logger must match the operating conditions and not allowed manipulations.

Working position of data logger:

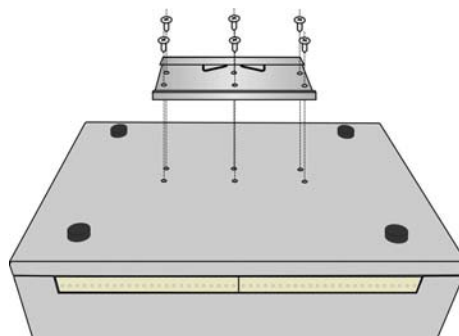
- data logger lies on horizontal nonflammable surface
- data logger is fixed by means of mounting consoles on the wall from nonflammable material or at low current switchboard – working position is with input connectors downward

The way of mounting of consoles to data logger and mounting holes dimensions:

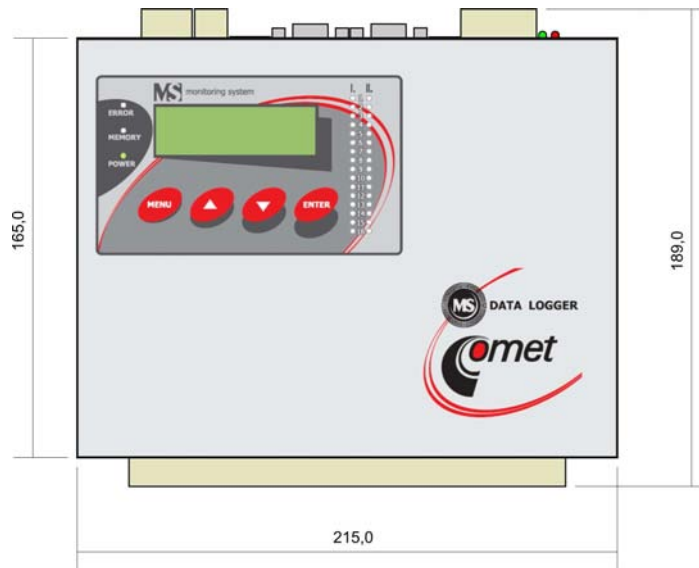


- data logger is fixed by means of the holder on DIN rail at low current switchboard - working position is with input connectors downward

The way of mounting the holder to data logger:



Mechanical drawing (without cables and connectors):

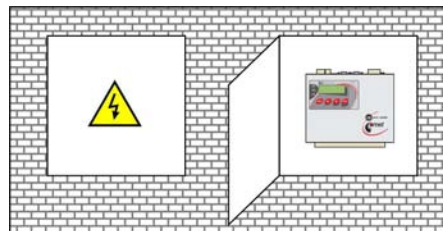
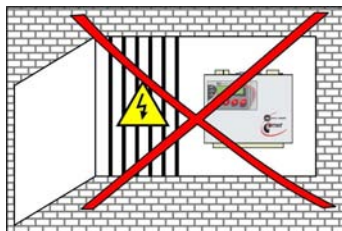


Connection terminals and connectors can be protected by magnetically fixed side covers MP027.



**Recommendations for mounting:**

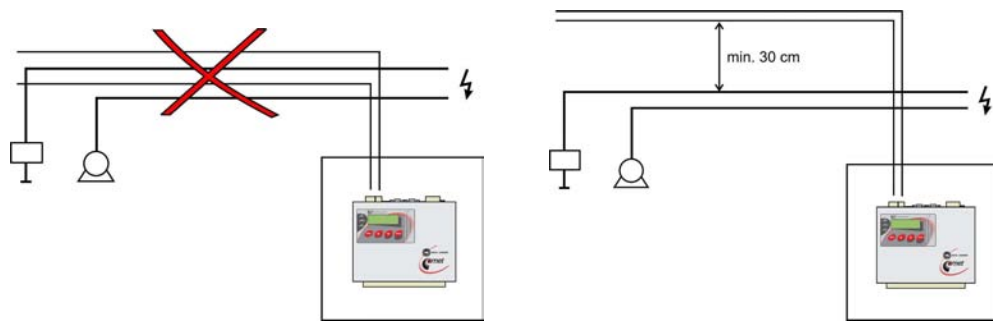
- **do not mount data logger near sources of interference** (data logger must not be mounted directly to power switchboard nor to its nearness. Also do not mount data logger near power contactors, motors, frequency converters and other sources of strong interference).



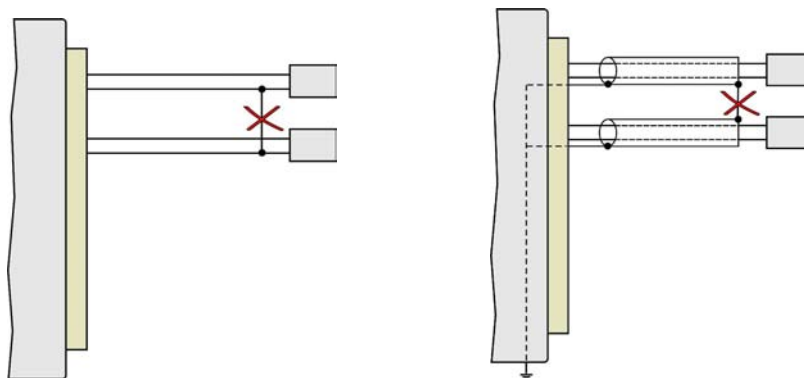
- In cable routing follow rules of standards for installation of low current distribution (EN 50174-2), especially it is necessary to pay attention to avoid electromagnetic interference intrusion to the leads, transmitters, transducers and sensors. Do not locate cabling near sources of interference.



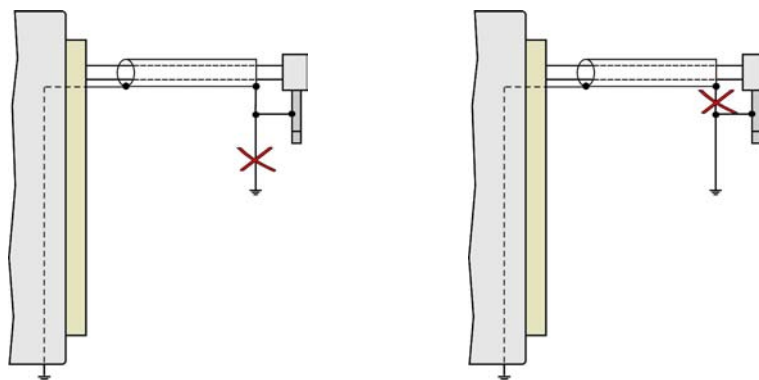
- **Do not use leads in parallel with power distribution network leads**



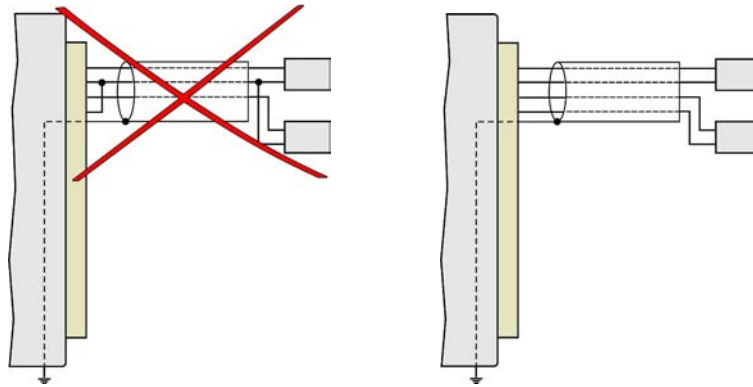
- **Do not use outdoor leads without corresponding protection against effects of static electricity**
- **if not necessary, do not connect system with other circuitry**
- **fundamentally use shielded cables** - e.g. SYKFY n pairs x 0.5, shielding at data logger side connect properly
- **do not create earth loops** - it concerns both measuring circuits and cable shielding.



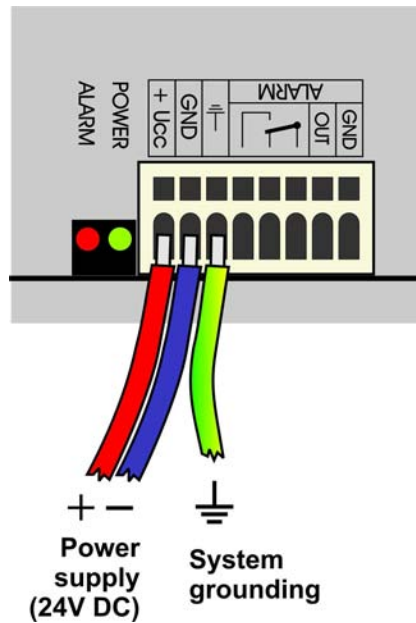
- **do not create hidden earth loops** - do not connect cable shielding at end device side, if these device do not have terminal designed for shielding. Shielding must not be connected to outer metal parts of the device nor with other devices. Do not use shielding as a signal lead.



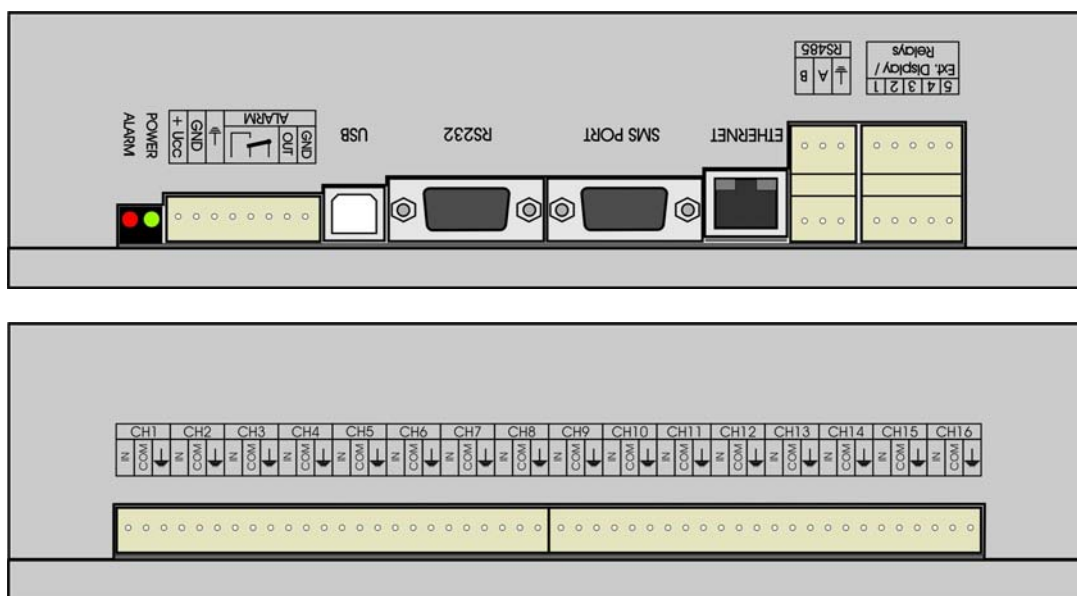
- Do not use common leads for several channels



- It is recommended to earth data logger at one point – there is a special terminal on power terminal. This earthing will work correctly, if system would not be grounded at other point at the same time.



### 3.2. Data logger interface connectors

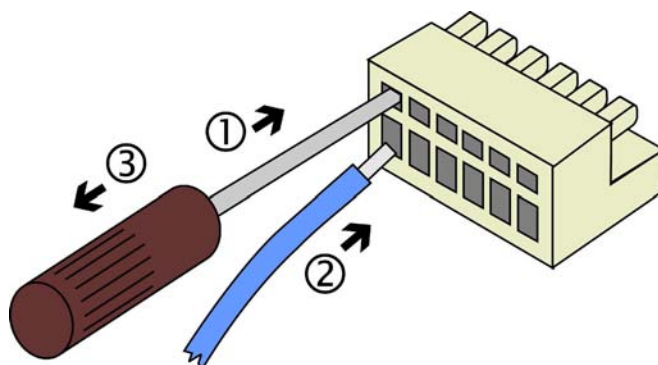


#### Connectors

Each signal is connected to self-locking terminal WAGO located on the side of the case. Insert flat-bladed screwdriver to rectangle terminal hole and push screwdriver towards away from you - contact is released. Connect wire to released terminal (circular hole behind the rectangular one) and close the terminal by removing the screwdriver. Connect positive pole of dc voltage of input signal to terminal IN, negative to COM, shielding to GND.

*Notice: The entire input terminal block is possible to remove from data logger by pulling it up from the connector.*

*Connection of leads:*



#### Connection of transducers with current output powered by current loop



In case of connection of channels with current loop powered from data logger (inputs A0) it is possible to insert other devices (panel meters, measuring computer cards, etc.) to current loop. In this case it is necessary to consider, if undesirable current coupling will not cause measurement inaccuracy. All inserted devices must be galvanic isolated from other circuits. In case, it is not possible to ensure this, use galvanic isolated inputs A1G and power loops from external source. Connection of input part of the module A0 including connection to two-wire probes is described in [appendix 2](#).

### Connection of thermocouple probes

For connection of thermocouples use appropriate extension cable. Continuity of material of thermocouple wire should be kept along the line up to data logger connector. Extension (compensation) cable for thermocouples type S (PtRh-Pt) is used from different materials (due cost reasons).

*Marking of subminiature thermocouple connectors and wires manufactured by OMEGA (in accordance with US standard):*

Type of thermocouple	Connector color	+ wire color	- wire color
K (NiCr-Ni)	Yellow	Yellow	Red
J (Fe-Co)	Black	White	Red
S (Pt10%Rh-Pt)	Green	Black	Red
B (Pt30%Rh-Pt)	White	Black	Red
T (Cu-CuNi)	Blue	Blue	Red

If there are more thermocouple inputs in data logger not galvanic isolated, avoid thermocouples to be mutually connected. If hazard of current leakage exists (mostly between thermocouple welded point and surrounding metal framework), thermocouple probes with galvanic isolated weld from outer probe shield or galvanic isolated input modules should be used. In other case high measuring errors can appear. It is recommended to use shielded thermocouple cables for longer distance (depending on possible interference sources).

### Connection of temperature resistance transducers

- data logger enables only two-wire connection
- choose wires of maximum diameter and minimum length. In [Appendix 6](#) additional errors caused by leads resistance are specified.
- measurement error caused by wire resistance can be compensated by suitable configuration of data logger

### Connection of transmitters with ADVANTECH protocol on RS input

- For connection of RS485 link for input module RS use e.g. shielded cable 2x2x0.5 mm<sup>2</sup>, where one pair can be used for power of transducers and second pair for link RS485.
- It is recommended to terminate the link by resistor 120 Ω at the beginning and end of the cable.

### Connection of output ALARM OUT

This output is dual:

- switching-over galvanically isolated relay contact
- voltage (galvanically connected to data logger)

The output is set from the manufacturer, that in case of selected alarm voltage appears at the output and simultaneously relay closes. It is enabled to set opposite behavior in data logger configuration (service menu).

Activity of this output can be cancelled from data logger keyboard by the user or remotely from the PC. It is enabled to identify by proper data logger configuration, who cancelled the alarm.

It is possible to connect to this output:

- **External audio indication unit** - use shielded cable up to 100m from data logger. Connect terminal ALARM OUT and GND on data logger with the audio unit in corresponding polarity. Connector CINCH of audio indication unit has positive pole on its central lead.
- **Telephone dialer** – in case of alarm telephone dialer dials specified telephone number and announces voice message. In dialer configuration first select user mode, then store phone number (or numbers) and record voice message. Then it is recommended to set delay of

transmitting after activation at least 10 seconds (*Function 4 I*). After completing of all settings connect dialer to phone line and check the function.

- Simultaneously galvanically isolated contact relay can be used for **control of other devices**. If indication controls external circuitry, it is recommended to set delay after activation at least 10 seconds to prevent possible false alerts.

### 3.3. Mounting and connection of output relays module MP018

Module contains 16 output relays with switching-over contact, which can be used for control of external devices (see parameters of relay and not allowed manipulations precautions). It is possible to assign any number of relays to any alarm to be closed if alarm appears. Relay are identified by numbers 1 to 16. Each relay has three self-locking terminals (switching-over contact). Activity of relay can be checked visually on assigned LED diodes.

#### **Mounting:**

Relay module is designed for mounting to switchboard with corresponding protection. Fix module (140x211 mm) by means of DIN rail holder MP019 or screw by means of side wall holders MP013 with four suitable screws (mounting holes are identical as for data logger with wall holders MP013, see figure above).

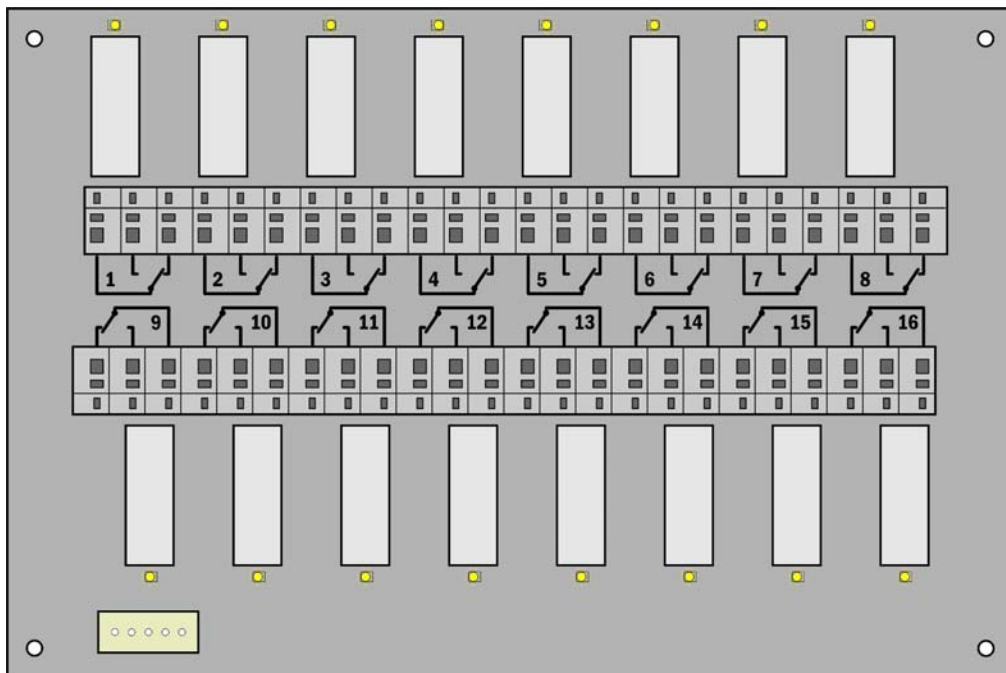
#### **Connection:**

Connect module to data logger with special cable MP017 (wiring diagram is specified in Appendix 10). Plug one cable end to corresponding connector on relay module, second end to data logger, connector Ext. Display & Relays (upper or lower connector half can be used, both parts are connected identically). Connect slave device on output terminals of relay. Pay attention to necessary safety (depending on the character of connected device).

#### **Configuration:**

Activate relay module function for proper operation in service menu of user SW. If data logger is delivered together with relay module, this function is activated already from the manufacturer.

*Relay module layout:*



### 3.4. Mounting and connection of external terminal with display

External terminal with display is designed for visualization of measured values, alarms and for data logger controlling from point up to maximum 50 m from data logger. Its function is identical with internal built-in display of MS5D (keyboard and display work in parallel).

#### **Mounting:**

External terminal with display is designed for mounting to suitable case. It can be mounted to low-current switchboard lid where data logger itself is located or to a separate case. Cut rectangular hole **133 x 94 mm** to the lid. Insert terminal unit and four screws from the front side and screw by means of metal holders from the back side. Tighten slightly.

#### **Connection:**

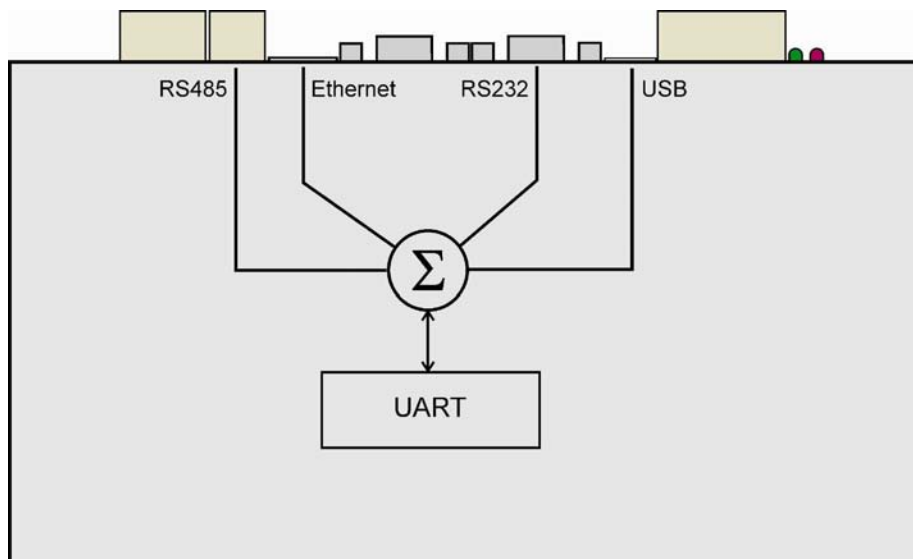
Connect external terminal to data logger with special cable (wiring diagram is specified in Appendix 10). Follow identical rules for cable routing as for input signals. Plug one cable end to corresponding connector on display unit, second end to data logger, connector Ext. Display & Relays (upper or lower connector half can be used, both parts are connected identically).

#### **Configuration:**

Activate display module for proper operation in service menu of user SW. If data logger is delivered together with display module, this function is activated already from the manufacturer.

### 3.5. Connection of data logger to the computer

Data logger contains for communication with computer one internal communication interface, which is separated to several external interfaces:

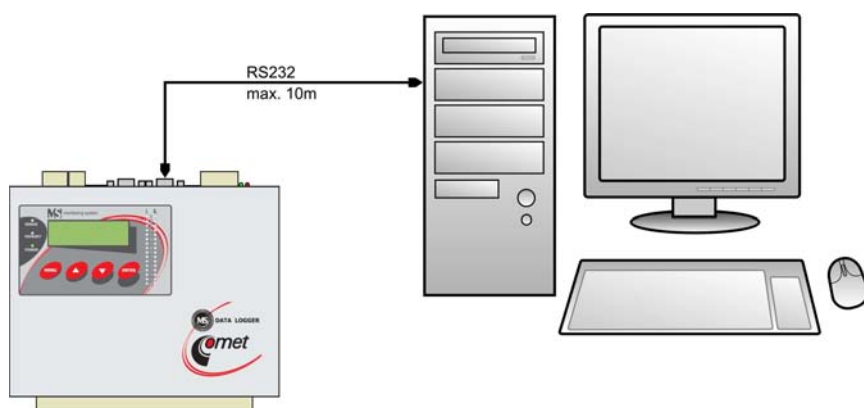


**Do not connect to these connectors simultaneously more than one device!**

#### 3.5.1 Connection of data logger to the computer by means of interface RS232

##### *Application:*

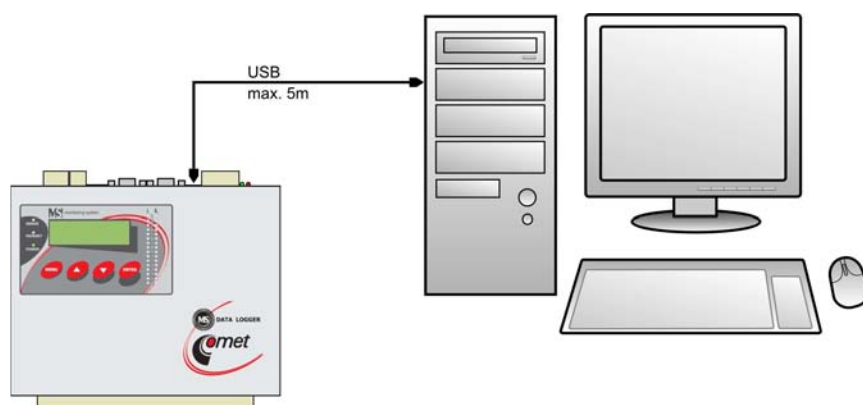
- only short distance between data logger and master device up to approximately 10 m
- 2 meters cable is included in delivery (wiring diagram is specified in Appendix 4).



### 3.5.2 Connection of data logger to computer by means of USB interface

*Application:*

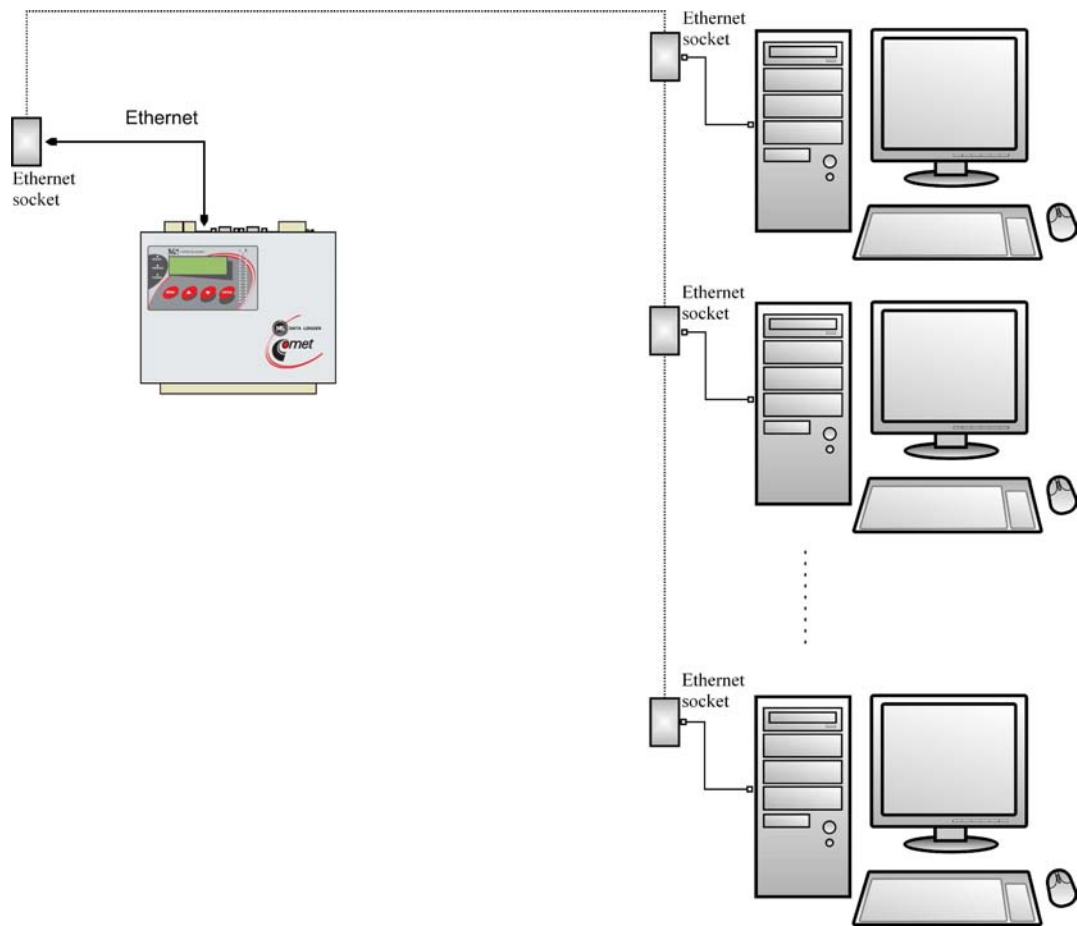
- *only short distance between data logger and master device up to approximately 5 m*
- *Use usual USB cable A-B*
- *Before Setting of communication in user SW it is necessary to connect converter physically to the computer to allow operating system to create virtual communication port. Drivers are installed to your computer during installation of user SW for data logger (valid for Windows 2000 and higher).*



### 3.5.3 Connection of data logger to the computer by means of Ethernet interface

*Parameters:*

- *Access enabled from different computers also via Internet*
- *Near data logger Ethernet network socket is available. Connection cable is not included in delivery*
- *data logger configuration and data download is not enabled simultaneously for several users*



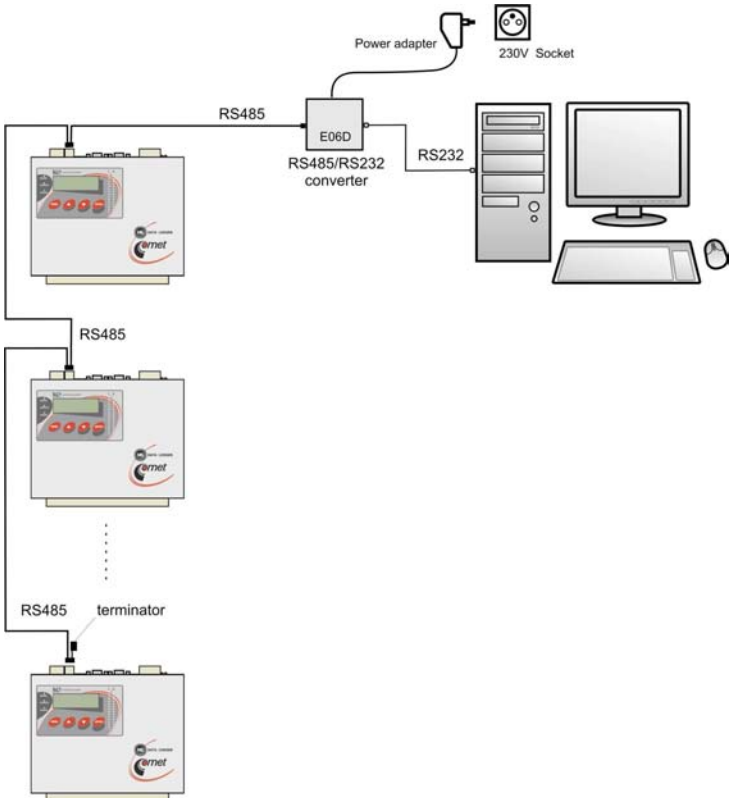
### 3.5.4 Connection of data loggers to the computer by means of interface RS485

*Parameters:*

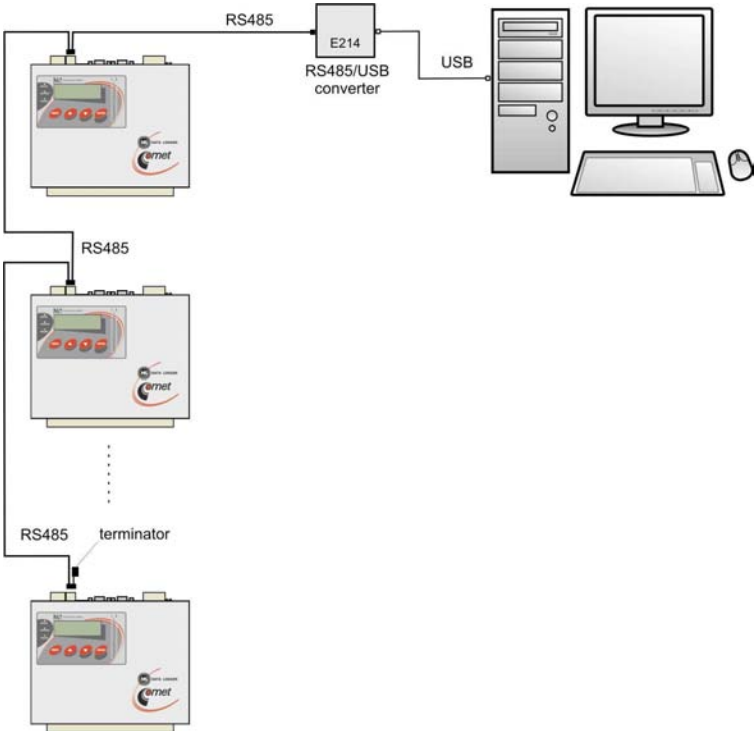
- *designed for long distance communication up to 1200m in indoor environment*
- *enables to communicate via one RS485 link with 32 data loggers*
- *necessary RS485 port in computer or suitable converter to other interface (RS232, USB, Ethernet)*
- *see detailed wiring diagrams of connection cables for recommend types of converters in Appendix 4*
- *recommended cable – shielded twisted two-wire, e.g. cable SYKFY n x 0.5, connect RS485 link (lead A and B) and cable shielding. Cable shielding is not connected to any circuitry of data logger, only continues on parallel terminal. Ground shielding near converter at the computer side, preferably to the PC frame.*
- *termination resistor - see Appendix 4.*
- *if using several data loggers connected to one RS485 network, then all must be set to the same communication speed and each unit must have its own address (no data logger in the network with the same address is allowed). This configuration can be changed both from user SW and directly from the data logger keyboard.*
- *do not connect to network of data loggers MS5 RS485 any other device, than data logger MS5, MS2+, MS3+ or MS4+*



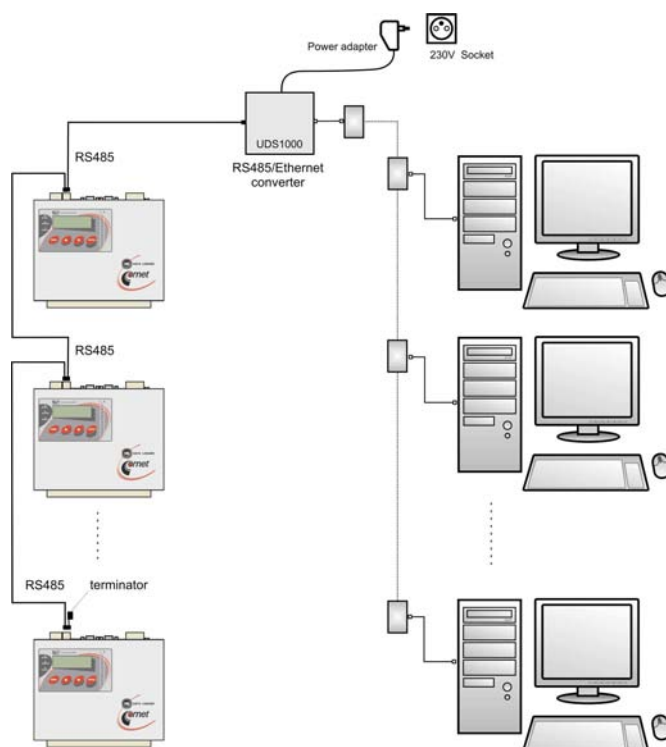
Drawing of connection by means of converter RS232/RS485 (recommended type E06D):



Drawing of connection by means of converter USB/RS485 (recommended type: E214):



*Drawing of connection by means of converter Ethernet/RS485 (recommended type: UDS100,UDS1000):*



### 3.5.5 Connection of data logger via modem

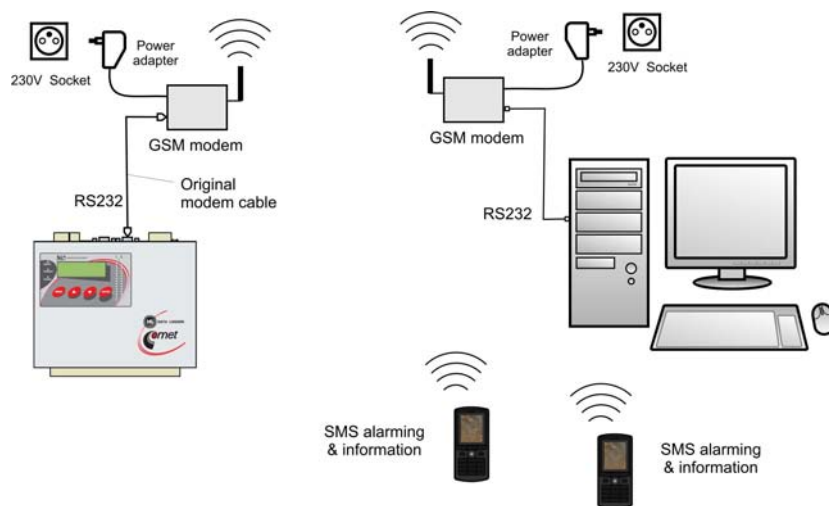
*Parameters:*

- *Computer is far from data logger*
- *In data logger and PC location is covering by GSM signal of the operator*
- *Possible work with SMS messages*
- *Except described GSM connection dialed connection via land line is enabled*

*Parameters:*

- *at the data logger side and PC side suitable modem must be used (recommended type: Wavecom M1306B)*
- *WARNING – data logger must be connected first by means of RS232 interface and configured, then connected to the modem! Detailed description is specified in the following chapter with the description of Configuration of communication.*
- *connect interface RS232 of data logger with modem by cable, delivered with modem !*
- *Used SIM card must enable data transfers (verify at your operator, not every operator automatically supports).*

Drawing of data logger connection to the PC by means of GSM modem:

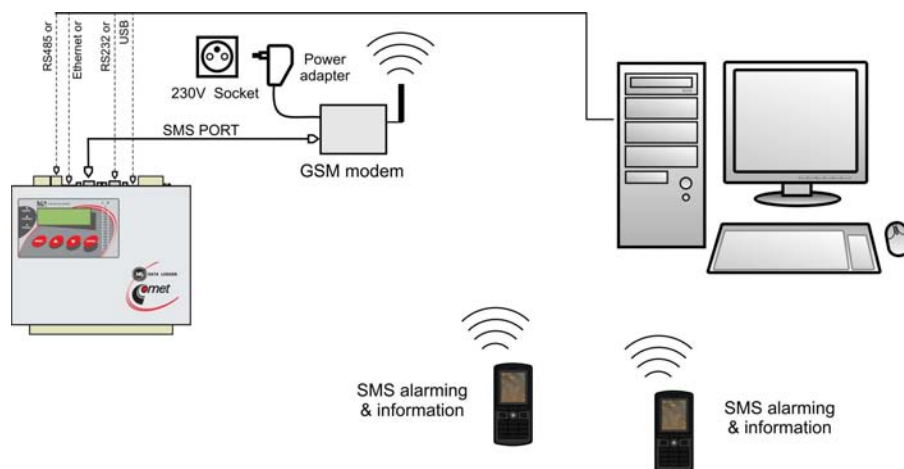


### 3.6. Wiring of data logger with supported SMS messages

There are two possibilities of connection with supported SMS messages:

- a) if data logger is connected to the PC by means of GSM modem – SMS message are sending and receiving when data logger does not communicate with the PC, drawing connection see above
- b) data logger is connected to the PC in different way than by means of GSM modem
  - data logger must be equipped with independent SMS port
  - this independent SMS port must be connected to GSM modem (recommended type Wavecom M1306B), use original connection cable delivered with modem
  - modem must contain SIM card enabling transfer of SMS messages. Must not be blocked by PIN code
  - area must be covered by GSM signal

Drawing of connection:



### 3.7. Connection of data logger to power

Data logger is powered from suitable power source (can be ordered). When powered from a different source it is necessary to use dc voltage at range specified in technical parameters of data logger and take into attention data logger consumption (see Appendix 1). In some applications it is necessary record runs correctly even in case of mains failure. In this case it is necessary to use back-up source UPS as for the computer. Above solution is necessary in cases power mains has extreme fluctuations and interference.

## **4.USER PROGRAM and CONFIGURATION OF DATA LOGGER**

### 4.1. Program features

Software for data logger enables to configure data logger and process measured data. It is delivered on the CD or can be download freely from [www.cometsystem.cz](http://www.cometsystem.cz). After installation program can run in two modes as:

- **basic (unregistered) version** – enables configuration of data loggers and table processing of data. It does not enable graphic processing of data, administration of users and passwords, automatic data download, storing of data outside of local computer, www display
- **optional (registered) version** – after entering of purchased registration key optional functions of the SW are enabled. Entering of key is enabled in installation of the SW or anytime later.

### Hardware requirements:

- recommended configuration: processor Pentium 1 GHz and higher, 512 MB RAM, Windows 2000 and higher

### 4.2. Installation of program

Insert disk with programs for Comet instruments to the CD drive and run program setup.exe. Installation wizard appears to perform all installation. Run installed program from menu Start-Program files-CometLoggers-MSPlus (if you did not change its location during installation).

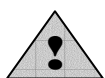
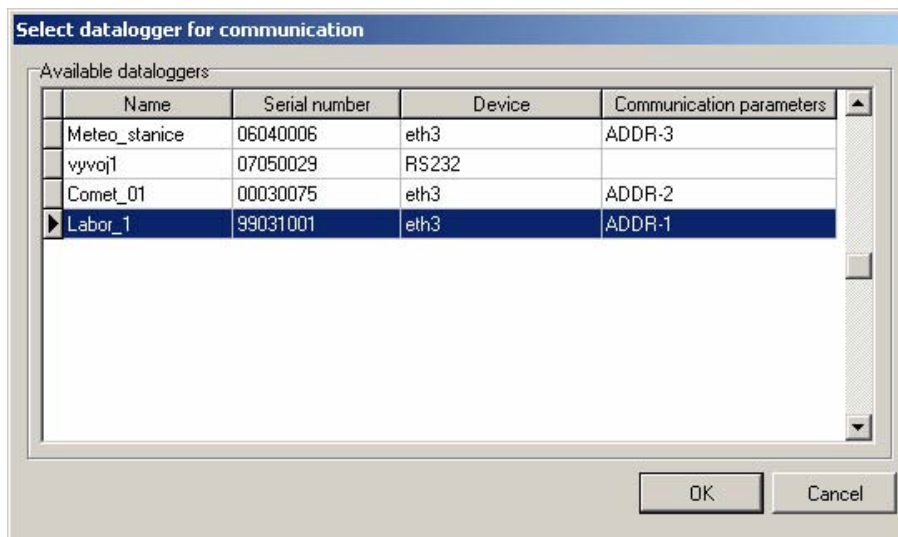
*Drivers for data logger USB interface are installed automatically for operation systems Windows 2000 and higher. For other USB devices, e.g. ELO214, installation of proper drivers to these devices is necessary.*

### 4.3. Setting of communication with data logger

User SW enables to work simultaneously with several data loggers connected in different ways to the computer. Configuration is performed in two steps:

- selection of communication device of the computer
- assignment of data logger to selected communication interface

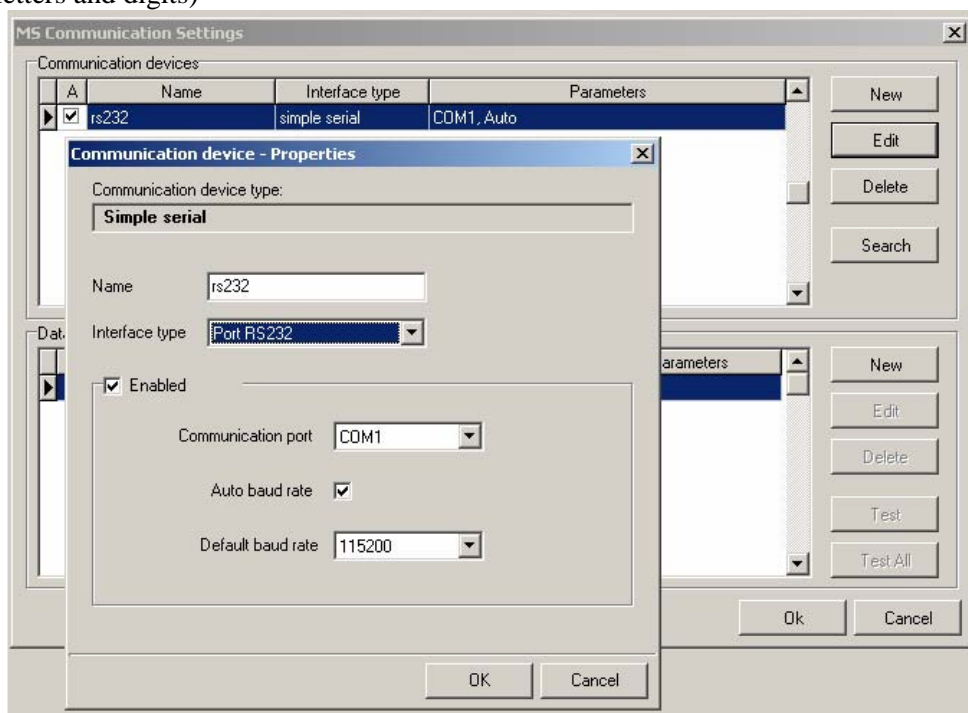
*If SW serves simultaneously to several data loggers, user is invited before each communication with data logger to select data logger from the list. In Display mode all data loggers are displayed simultaneously (except those connected via modem).*



*Configuration of data logger must correspond with configuration in the computer. E.g. if data logger is set to RS232 interface and the SW is set to network serial interface, data logger will not communicate.*

#### 4.3.1 Communication with data logger connected by means of interface RS232

- connect data logger to the computer and switch on its power
- In the software select menu item Configuration –Communication settings and continue in options New communication device - Simple serial without addressing
- In the next window select number of COM port and enter your name of the device (selectable, from letters and digits)



- Confirm window and choose selection Search. Program goes through all used communication speeds and displays found data loggers in bottom window part (Dataloggers). Finally confirm window Setting of communication (OK).

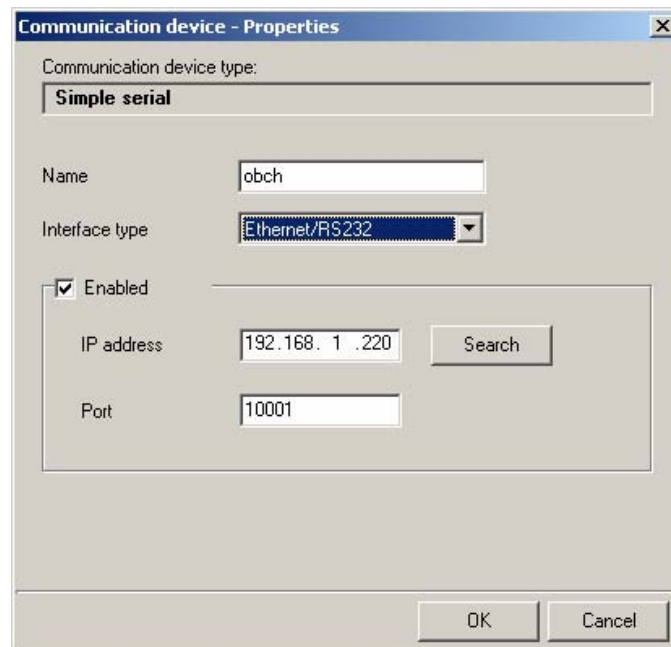
#### 4.3.2 Communication with data logger connected by means of interface USB

- procedure is the same as in previous case. USB interface is interpreted in the computer as *Virtual COM port*. Drivers would be installed automatically during installation of the SW. Drivers are available also on installation CD or at [www.cometsystem.cz](http://www.cometsystem.cz).

*If you disconnect the converter from the computer, it can happen, data logger will not be found in the next communication. The cause is, operation system assigned to converter different number of communication port. You can change it in the above window of communication device or in operation system – Device Administrator, COM and LPT ports – Parameters – Specify.*

#### 4.3.3 Communication with data logger connected by means of Ethernet interface

- connect data logger to the computer and switch on the power
- Select software menu item Configuration –Communication settings and continue in selections New communication device - Simple serial without addressing
- select in the following window type of interface Ethernet/RS232, enter your name of device (selectable, from letters and digits)
- enter IP address of data logger (if you do not know you can search the network by button Search) and number of port (10001)

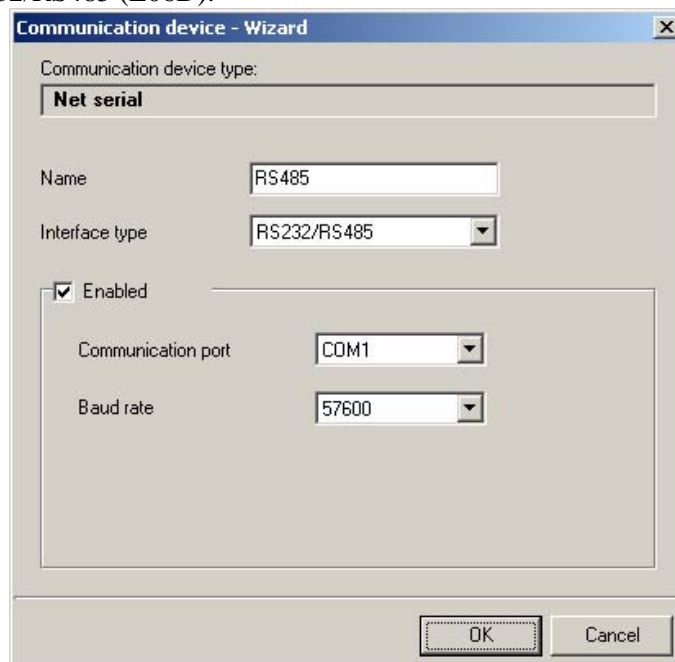


- Confirm window and enter selection Search. Program goes through all used communication speeds and displays found data loggers in the bottom window part (Dataloggers). Confirm finally Communication settings (OK).
- In menu Configuration – Datalogger setting or directly on data logger by means of the keyboard and display switch communication interface to Ethernet. *If you have set to RS232, data logger will work, but items referred to Ethernet interface will not be displayed (warning e-mails, traps etc.) Then again verify functionality of the connection.*

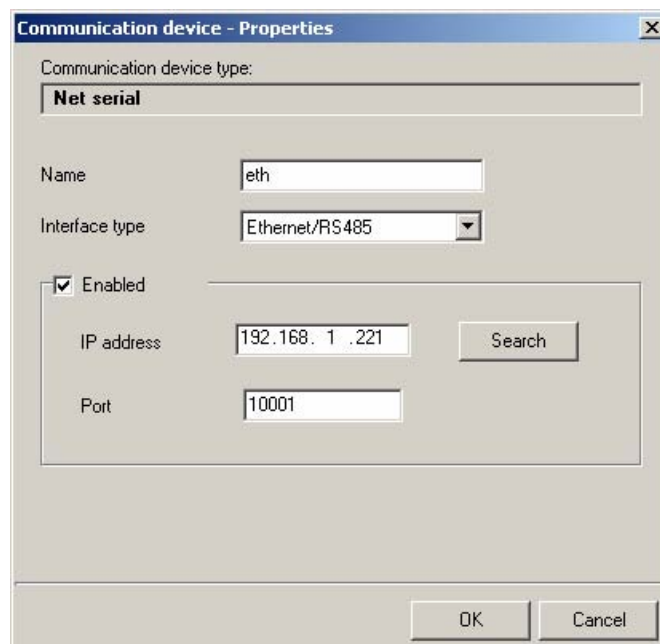
#### 4.3.4 Communication with data loggers connected by means of interface RS485

- connect data logger to computer and switch on the power
- check on display of data loggers, if the same communication speed and different addresses are set
- In the software select menu item Configuration –Communication settings and continue in options New communication device - **Net serial**

- in the following window enter your name of the device (selectable, from letters and digits) and accordingly with the type of used converter enter next configuration:
- for converter RS232/RS485 (E06D):



- for converter USB/RS485 – configuration is analogical as in previous case, after first connection of the converter to the PC corresponding driver to converter must be installed.
- for converter Ethernet/RS485



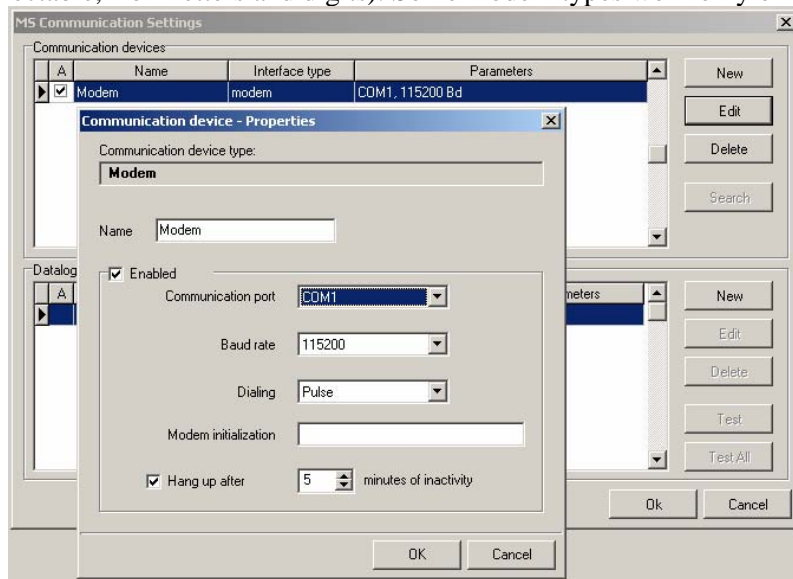
More details – see chapter 5.3.3.

*Used converter must support interface RS485 and be switched to interface RS485!*

- Confirm window and enter selection Search. Program goes through all addresses and displays found data loggers in the bottom window part (Dataloggers). Finally confirm window Communication settings (OK).

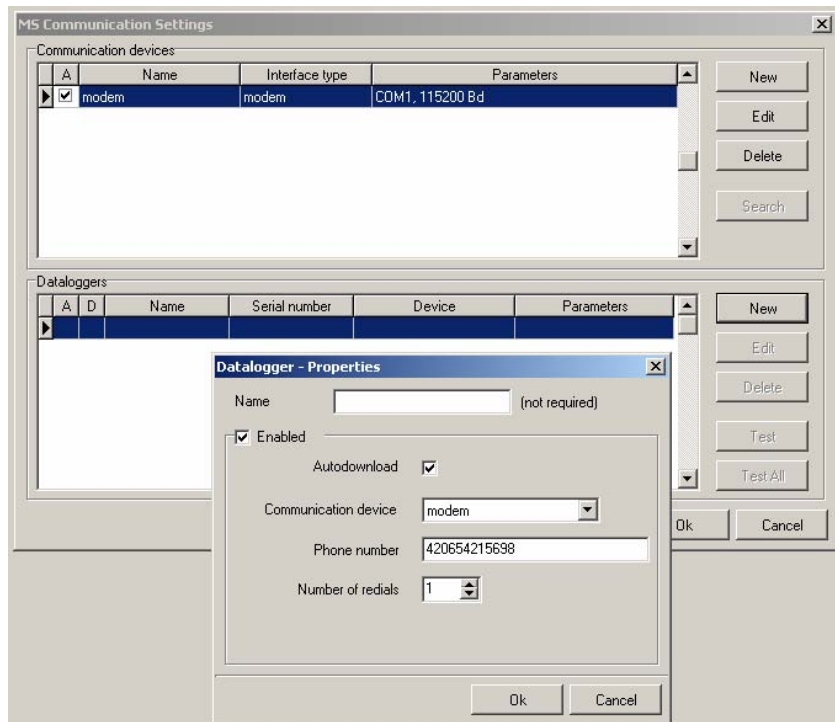
### 4.3.5 Communication with data logger connected by means of modem

- connect data logger to the computer by means of interface RS232, switch on the power and set connection with the computer to RS232 in accordance with above instructions
- read configuration of data logger and set communication interface data logger RS232-modem. Depending on the modem type select preset configuration string for its configuration, store to data logger
- connect data logger to the modem (use original modem cable), on computer side connect to its serial interface second modem
- connect modem to power and after about 10s connect data logger to power. *This way it is ensured data logger after first switching on will configure the modem.*
- In the software select menu item Configuration –Communication settings and continue with selection New communication device - Modem
- In the next window select number of COM port, where modem is connected and enter your name of the device (selectable, from letters and digits). Some modem types work only on speed 9600 Bd.



- confirm window and in part Dataloggers enter selection New, select communication device and enter telephone number of modem at data logger





- perform Test of connection

*SIM cards of both modems must enable data transfers and must not be blocked by PIN code. More information concerning solution of problems is specified in Appendix 5.*

#### 4.4. Basic items in menu program

Item menu **File**:

- reading stored file from disk to table  
*Data in files are stored on disk in a special binary format, which is not compatible with standard formats. In case, value in table is not available or is not correct, error message is displayed – more information see in Appendix 7*
- reading data from data logger  
*After this selection window for selection of data logger is displayed (if there are more than one), user can select name of file, where data will be stored and after if data logger will be erased after data transfer*
- configuration of the printer
- print – *if graph was created, first query is displayed, if printing of table or graph is required*
- configuration of program Options – *only in optional version of program*
- configuration of language localization
- logout of user – *only in optional version of program*

Item menu **Show**:

- table – *displays measured values, can be set different numbers of channels. Exports to dbf and xls format are available*
- graph – *only in optional version of program*
- Event viewer – *here actions are stored run by the SW with data logger and theirs result*

Item menu **Configuration**:

- Datalogger settings – *detailed description will follow*
- Erase datalogger memory – *after confirmation erasing is performed*

- Reset counter inputs and erase memory - after this *selection counter in counter modules (CTU, CTK) are reset and consequently data logger data memory is erased totally.*
- Reading configuration from file – *reads configuration from already downloaded file with data record. It is possible to restore configuration to data logger memory.*
- Deactivate alarm signalisation – *if enabled, it is possible to cancel activity of ALARM OUT output remotely from the PC.*
- Communication settings – *configuration was described above*

Item of menu **Display** - *online visualization of measured values on the computer, reading interval can be set in section File-Options, bookmark Display (in basic version it is fixed to 10s, in optional version can be set from 10 s).* In suitable configuration the mode can be shared on several computers. See [Application notes](#).

## **5. DESCRIPTION of CONFIGURATION and DATA LOGGER MODES**

Use menu item **Configuration – Datalogger configuration** to configure data logger parameters. After reading of configuration window is displayed with several bookmarks. *If you work with Profiles, window with Profile offer is displayed before.*

### **5.1. Bookmark Common**

- enter data logger **name** – maximum length is 16 characters, use letters (no diacritic marks), digits, underline.  
*A folder under this name is created in computer, to store downloaded files with recorded data in. Data logger name is displayed on the display after switch on and is available in data logger Menu. The name is used for identification in user SW.*
- check if **Date and time** in data logger is set correctly



*When changing time in data logger, always all recorded data erasing will be required by the SW.*

- **Security**
  - if need to secure data transfer by a password, tick *Communication data encryption with password* and enter password (8 characters)
  - if you need to define names and rights users of the system, first tick *Communication data encryption with password*, enter password and then switch on *Protection of access to HW functions* and define each system user.
  - if you need to assign PIN codes to users for their identification in canceling of alarms or optionally other rights, do it in window *Users and password – Parameters – Details* and switch on *Alarm confirmation with PIN* and create new PIN code. Then switch on *Confirmation of alarm signalisation protected by user PIN* or *Condition setting from PC protected by user PIN*.
  - if you need to secure some menu items of data logger against arbitrary overwriting, tick proper selection and enter PIN. *This PIN is different from users PIN.*



*If you use Communication data encryption with password and forget the password, then it is not possible to recover the communication in simple way!*

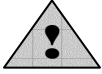
- if you will need to mark parts of record with your notes during operation from data logger keyboard, use **Processes**. More detailed description is specified in chapter [Application notes](#).
- if you will need to swap between different configurations during data logger operation, use **Profiles**. More detailed description is specified in chapter [Application notes](#).

- if you will use alarm output **ALARM OUT**, define, if and how data logger user can cancel its activity. *If you need to identify person, alarm was cancelled by, proceed in accordance with chapter [Application notes](#).*

## 5.2. Bookmark *Communication*

Here you can set:

- **Datalogger communication interface** - you can change the type of used data logger communication interface



Change of communication interface can cause after storing data logger configuration you would have to physically connect via this interface and change data in *Ccommunication setting*. If data logger has display with keyboard, you can change it directly on data logger. If you set on data logger interface RS485, you must assign the same interface also in SW, otherwise data logger will not communicate!

If you set Ethernet communication interface, you will be able to use data logger www pages, send warning e-mails and traps. (*Condition is to have installed Ethernet interface in data logger*).

- **Baudrate** – preset value is 115 200 Bd. If you use classic connection via RS232 (COM port), then this is the highest available speed. For USB connection you can use higher speed. For Ethernet interface cannot be changes (fixed to 115 200 Bd). For RS485 with larger networks a need to decrease the speed can appear.
- **RS485 network address** – relevant in communication via RS485, each data logger in the network must have different address!
- **Datalogger responds to incoming SMS messages** – if data logger is connected to GSM modem, you can get actual measured values and alarm states by sending SMS from mobile telephone to number of modem. Data logger reacts on three texts of received SMS messages: **Info**, **Alarm**, **Ch1** to **Ch16**. For more details see chapter [Application notes](#).
- **Datalogger sends SMS message when selected alarms are activated** – if data logger is connected to GSM modem, you can assign one to four telephone numbers to each alarm states warning SMS message containing description of created alarm is send to.

*Quick and reliable SMS message delivery depends on quality of GSM network.*

## 5.3. Bookmark *Profile*

- **Cyclic record** – if it is not ticked, then after fulfilling of memory data record ends. Measurement and evaluation of alarms continues. If it is ticked, then after fulfilling of memory oldest data are overwriting with newest.
- **Alternative record times** – record must not run in fixed time intervals, but it is enabled also to define up to four times in day, when measured values will be stored.
- **Language** – language localization of fixed messages on data logger LCD. It does not concerns language localization of program
- **Alarm signalisation** – alarms can also be signalized acoustically or by ALARM OUT output. Signalization of alarm can be deactivated (cancelled) by the user, if it is enabled. It can be done in several ways:
  - by pressing of the ENTER key on data logger
  - by means of data logger menu with possibility to require PIN of user
  - remotely from the computer

In case alarm which activated the indication is cancelled and appears again, indication is activated again. Canceling (deactivation) of indication simultaneously refers to internal audible indication and to ALARM OUT output.

- if there is a need to indicate acoustically some alarms directly in data logger, tick *Internal acoustic alarm signalisation* and specify for each alarm, if alarm is indicated this way.
  - If there is a need to activate ALARM OUT output, tick ALARM OUT and specify for each alarm, if alarm is indicated this way.
  - changes of ALARM OUT output state can be recorded and it is enabled consequently to identify the user canceling the alarm by means of *Administration of users and passwords*.
  - if there is a need to record changes of all alarm states, tick selection **Recording of ALARM OUT state changes** and **Recording of all alarms changes**
  - if there is a need to indicate acoustically the state of memory occupation, tick this selection
- **SMS phone number list** – if you use sending of SMS messages after alarm creation, then enter here telephone numbers for sending messages. *Enter numbers in international format with country code, e.g. 0049... or +49...*
  - **Critical states actions** – it is enabled to assign actions similar to alarms to some error states, evaluated by data logger (error of measurement on some of input channels, error in configuration of data logger, reaching of specified occupation of data memory and self test error). Do not use zero duration time of critical state for evaluation of the action. Use at least 10s delay. If this state lasts this time without interruption, selected actions will be performed.

#### 5.4. Bookmark *Ch.. Identity & Calculations*

This and the following bookmark refer to data logger input channels to be switched over in left lower window corner.

Set your own identification of measured points and optional conversion of measured values at this bookmark:

- in upper part of bookmark name and range of installed input module is specified for information.
- **Channel name**: - enter name of measured points in length of maximum 16 characters.
- **Physical unit** (*except binary inputs*) – you can select from the list or write your own in length of maximum 6 characters
- **Description of state open/closed** (*in binary inputs*) – user selectable strings in length 16 of characters to describe state „closed“/ „open“ (input S,SG) resp. „without voltage“/ „with voltage“ (input S1)
- **Number of decimal places** (*except binary inputs*) – you can set maximum 5 digits behind decimal point.
- **Recalculation** (*except binary inputs*)- measured value from input module can be recomputed by means of two-point linear transformation to other value. Default state is set to conversion 1:1 and full scale points of module input range module or value 0-0, 1-1 are used. Value can be arbitrary with the exception of state, both input values are the same.

*Example: data logger with current input 4 - 20 mA is connected to temperature transducer with current output, which generates at temperature -30°C output current 4 mA and at temperature 80°C current 20 mA. Enter following values to the table:*

*Measured value 4.000 [ mA] will be shown as -30.0 [°C].*

*Measured value 20.000 [ mA] will be shown as 80.0 [°C].*

- **Processes** (*except binary inputs*) – allow which processes are enabled to use. See [Application notes](#).

- **Show increments** (only CTU, CTK inputs) – LCD displays always absolute, resp. converted absolute counter value. It is enabled to display in record table only increments between consequent measurements in accordance with adjusted logging interval.
- **Bouncing filter** (only CTU, CTK inputs) – designed to avoid possible transient effects during change of logical level of the input signal. Filter parameters are specified in description of input modules.
- **Connected device address, Maximum wait time, Multichannel device, Multichannel device channel number, Baudrate** – configuration of RS input, more details are specified in Appendix 3.

#### 5.5. Bookmark Ch.. Measuring & recording

- tick **Input channel is measuring and fires alarms** to enable this channel for measuring,
- if there is a need record measured value, select one from three available record mode. These modes can be combined. *Binary inputs S, SI, SG enable only the third mode – record of state changes on input.*

A) **Continuous record** - if there is a need to record measured value to the instrument memory without respecting any other conditions, use this selection and select suitable logging interval. Logging function can be limited in time both globally (i.e. Date and time from ...to) and daily (daily from...to).

*If no from offered logging intervals suit you, use record in alternative daily times, defined before on bookmark Profile.*

*Example of table with continuous record:*

Date and time	Channel 1: T[°C]
1.1.2004 08:00:00	23,8
1.1.2004 08:30:00	24,5
1.1.2004 09:00:00	26,8
1.1.2004 09:30:00	33,2
1.1.2004 10:00:00	37,5
1.1.2004 10:30:00	42,3
1.1.2004 11:00:00	45,1
1.1.2004 11:30:00	45,2
1.1.2004 12:00:00	44,1
1.1.2004 12:30:00	40,1
1.1.2004 13:00:00	35,2
1.1.2004 13:30:00	30,1

B) **Conditional record**– if there is need to record measured value to the instrument memory only in case, if defined conditions are valid, then use this selection. Select suitable logging interval and assign conditions for the record. Logging function can be limited in time both globally (i.e. Date and time from ...to) and daily (daily from...to).

*If no from offered logging intervals suit you, use record in alternative daily times, defined before on bookmark Profile.*

*Example of measured values list (condition for record – temperature is higher than 40°C):*

Date and time	Channel 10: T[°C]
1.1.2004 10:55:00	40,1
1.1.2004 11:00:00	41,3
1.1.2004 11:05:00	40,2
1.1.2004 11:30:00	40,3
1.1.2004 11:35:00	42,5

1.1.2004 11:40:00	40,1
-------------------	------

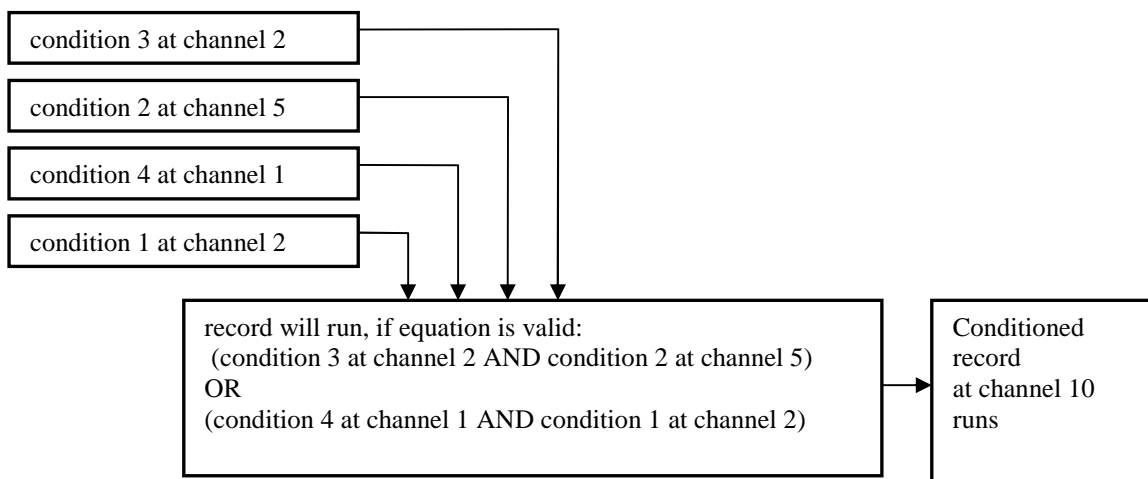
By means of continuous and conditional record situation can be solved, when device operation is monitored. In case of its trouble-free operation record with long logging interval is sufficient, but in case of failure there is a need to have detailed record with failure.

*Example of list of measured values (continuous record with interval 30 minutes and conditional record with interval 5 minutes at temperature higher than 40°C):*

Date and time	Channel 1: T[°C]	
1.1.2004 08:00:00	23,8	continuous
1.1.2004 08:30:00	24,5	continuous
1.1.2004 09:00:00	26,8	continuous
1.1.2004 09:30:00	33,2	continuous
1.1.2004 10:00:00	37,5	continuous
1.1.2004 10:30:00	39,3	continuous
1.1.2004 10:55:00	40,1	conditional
1.1.2004 11:00:00	41,3	continuous +conditional
1.1.2004 11:05:00	40,2	conditional
1.1.2004 11:30:00	40,3	continuous +conditional
1.1.2004 11:35:00	42,5	conditional
1.1.2004 11:40:00	40,1	conditional
1.1.2004 12:00:00	34,1	continuous
1.1.2004 12:30:00	30,1	continuous
1.1.2004 13:00:00	25,2	continuous
1.1.2004 13:30:00	20,1	continuous

Conditional record can be linked to a simple *Condition* or on logical *Combination of conditions* (maximum four conditions from different channels linked by operators AND and OR).

*Example of conditional record in case of logical combination of conditions:*



- C) **Sampled record** - if there is a need to know time and measured value when certain event appeared defined by *Condition* or *Combination of conditions*, use this selection. Work with conditions is similar as in previous case. Always time and value is stored when defined state of conditions started or was terminated.

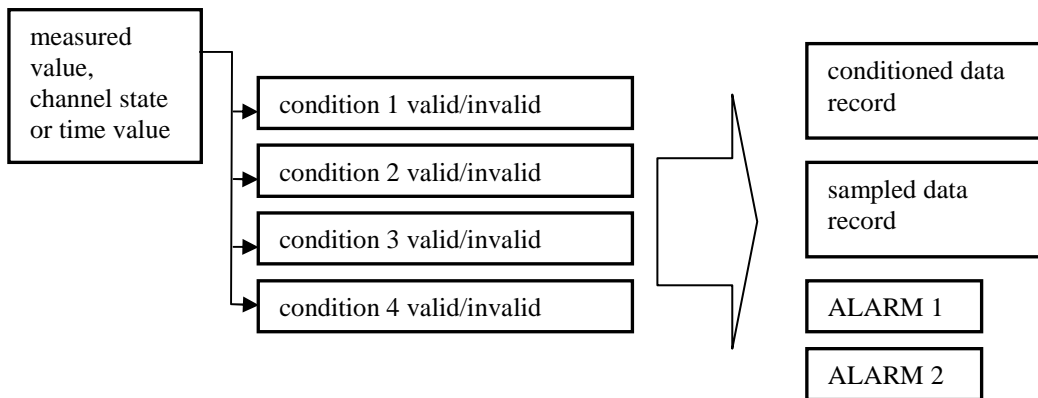
*Example table with sampled record:*

Date and time	Channel 1: T[°C]
1.1.2004 08:01:11	23,8
1.1.2004 08:40:23	24,5
1.1.2004 09:05:07	26,8
1.1.2004 09:12:44	33,2
1.1.2004 10:08:09	37,5
1.1.2004 10:32:48	42,3

Record of binary channels behaves analogically as sampled record, when each change on binary inputs is stored. Value is replaced by text description, which corresponds with user configuration.

### 5.6. Bookmark *Ch..Conditions*

*Condition* defines certain state of measured value (exceeding of adjusted limit upwards/downwards, defined state of binary input) on specified input channel. It can have two states: valid-invalid. Up to four independent conditions at one channel can be defined. Creation of alarm states depends on state of conditions and sampled and conditional record can be controlled by them:



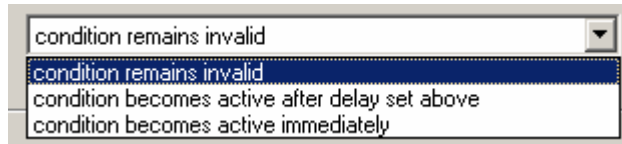
Data logger enables to set condition depending on measured value, on time and condition, which validity is remotely controlled from the computer. Each from four conditions it is possible to switch on for evaluation. Binary inputs has lower number of possibilities to set conditions, setting is analogical.

A) If there is a need to activate some actions dependent on **Measured value**, select *Start of validity: Input value*

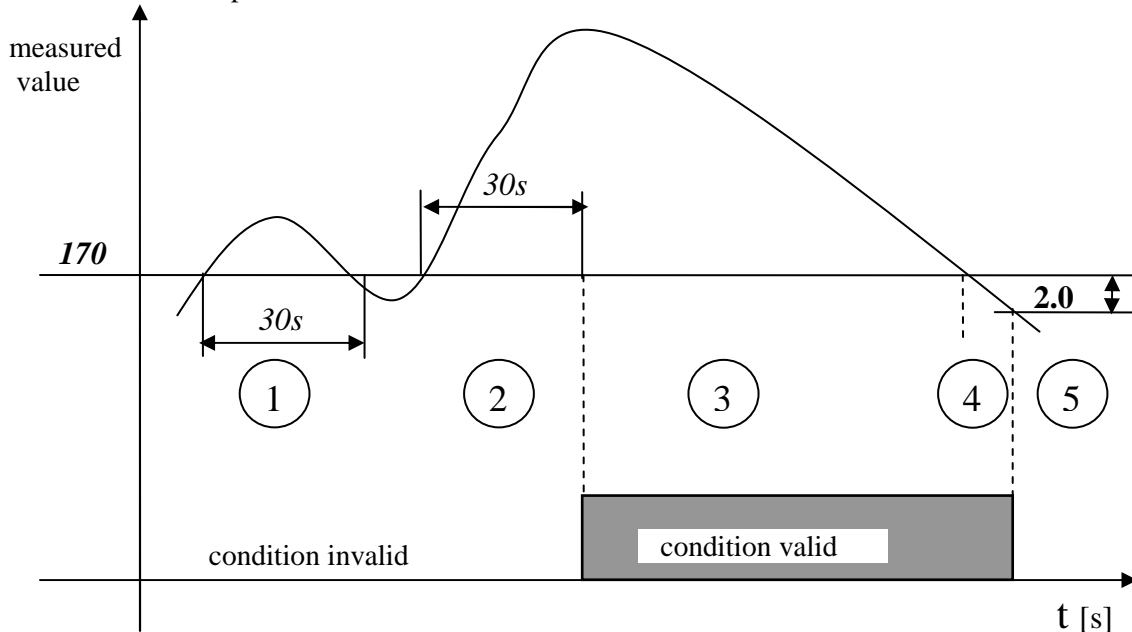
*Example:*

Select, if condition will be valid, if measured (*Input*) value is higher or lower than adjusted limit (170) and how long must this state last without interruption. Than condition becomes valid (30s, maximum 65535s). Define further circumstances for termination of condition validity. If no validity termination is defined, condition remains permanently valid (till change of data logger configuration). You can select validity termination after value return back with hysteresis (2) OR (optionally AND) if defined time expired (maximum 65535 s).

You can also define, how the state of the condition works if measurement error appears:



If other devices are controlled based on validity of the condition (relay outputs, sending of SMS message, audible indication etc.), always use nonzero hysteresis and nonzero time delay for creation of condition validity to avoid false alarms at transient effects of input value.



*Description of function:*

- Area 1... measured value exceeded limit, but was not over this limit for required duration, condition invalid.
- Area 2 ... measured value exceeded limit and was over this limit for required duration. After finishing adjusted condition became valid.
- Area 3 ... measured value is still over limit, condition is valid
- Area 4 ... measured value already dropped below limit, but nonzero hysteresis is adjusted, for finishing of condition validity measured value must drop of adjusted hysteresis value
- Area 5 ... measured value dropped below limit decreased of hysteresis, condition is invalid

*Switching of data logger power in different condition states:*

1. if power of data logger is switched OFF in area 2, after switching ON measured value si still over limit and required delay is not over, data logger continues in testing on, as no power failure would appear.
2. if power of data logger is switched OFF in area 2, after switching ON measured value is still over limit and required delay is over already, condition becomes valid immediately
3. if power of data logger is switched OFF in area 2 and after switching ON measured value is not over limit, cycle of time testing is interrupted (similarly as in area 1).
4. if power of data logger is switched OFF in area 3 or 4, after switching ON measured value is over limit decreased of hysteresis, condition stays valid. But if measured value does not match this, condition is invalid immediately.

*Other examples of configuration of conditions depended on measured value:*

- *Setting of condition validity at measured value drop:*

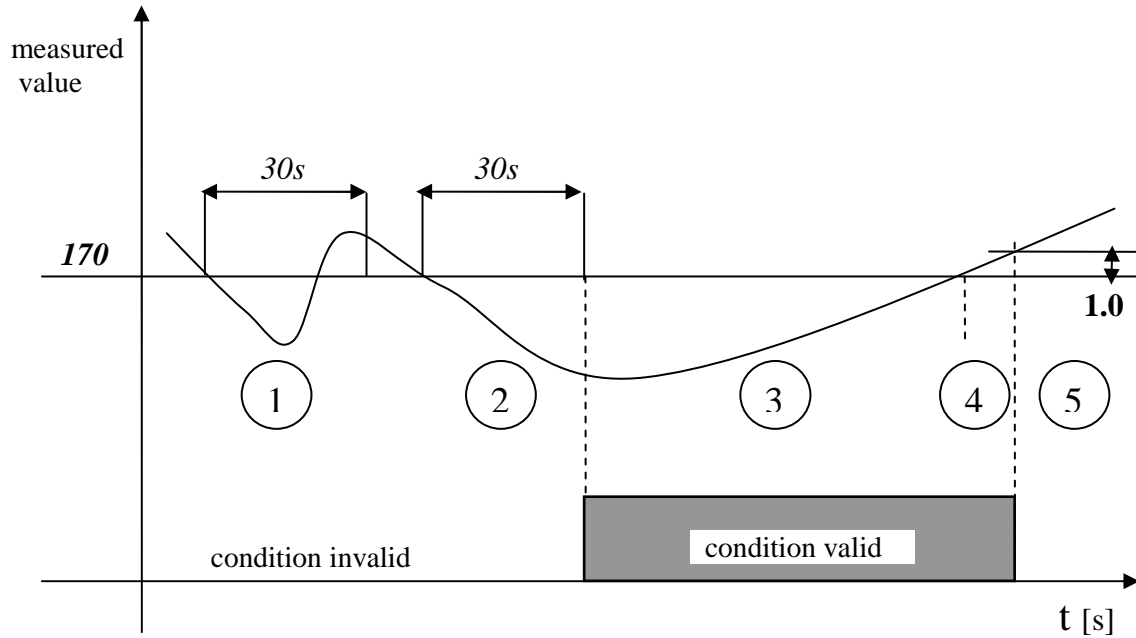


Condition 1

Start of validity:  <  °C for the duration of  s

End of validity:  value returns back with hysteresis  °C together with  expires  s

In the case of input error (measured value is not available):



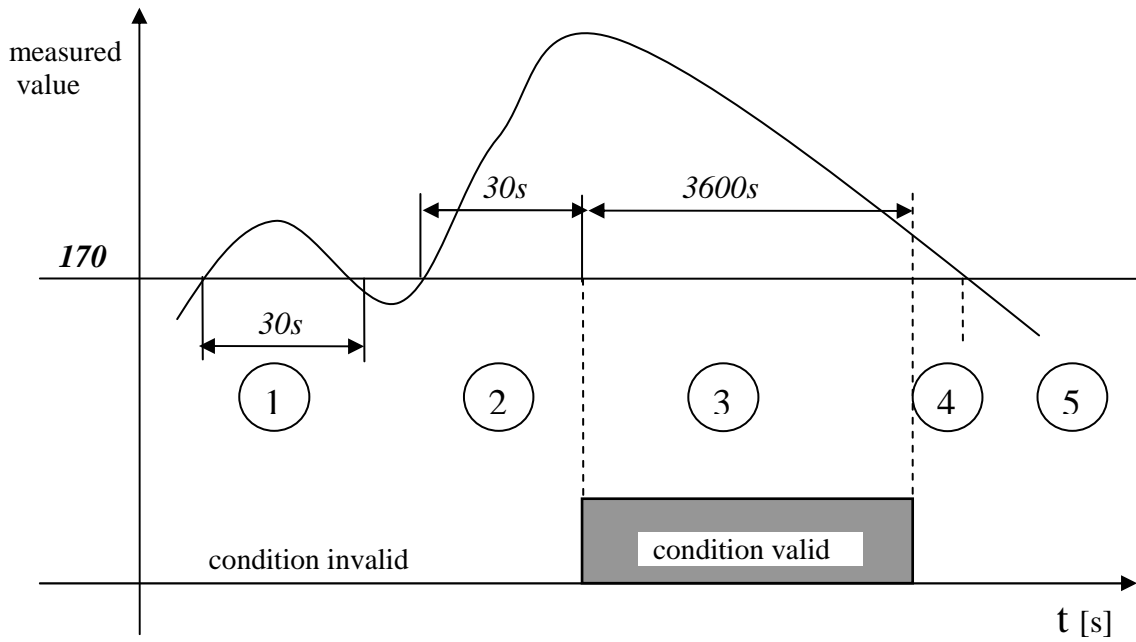
- *Condition with fixed specified time validity*

Condition 1

Start of validity:  >  °C for the duration of  s

End of validity:  value returns back with hysteresis  °C together with  expires  expires  s

In the case of input error (measured value is not available):



To renew validity of condition measured value first must drop below specified limit and then to exceed the limit.

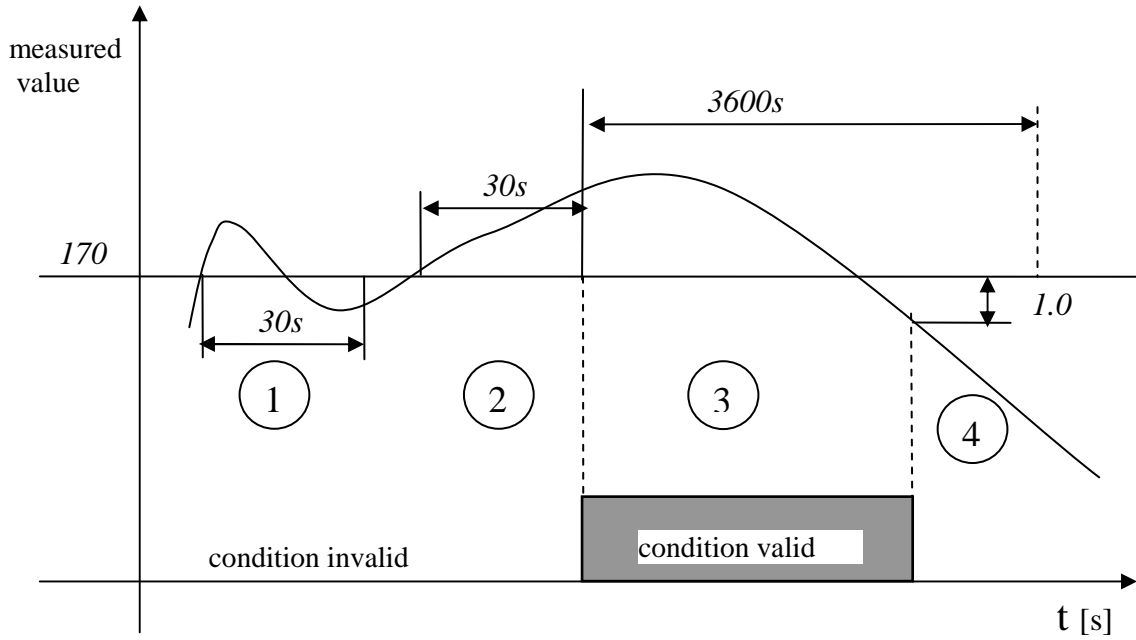
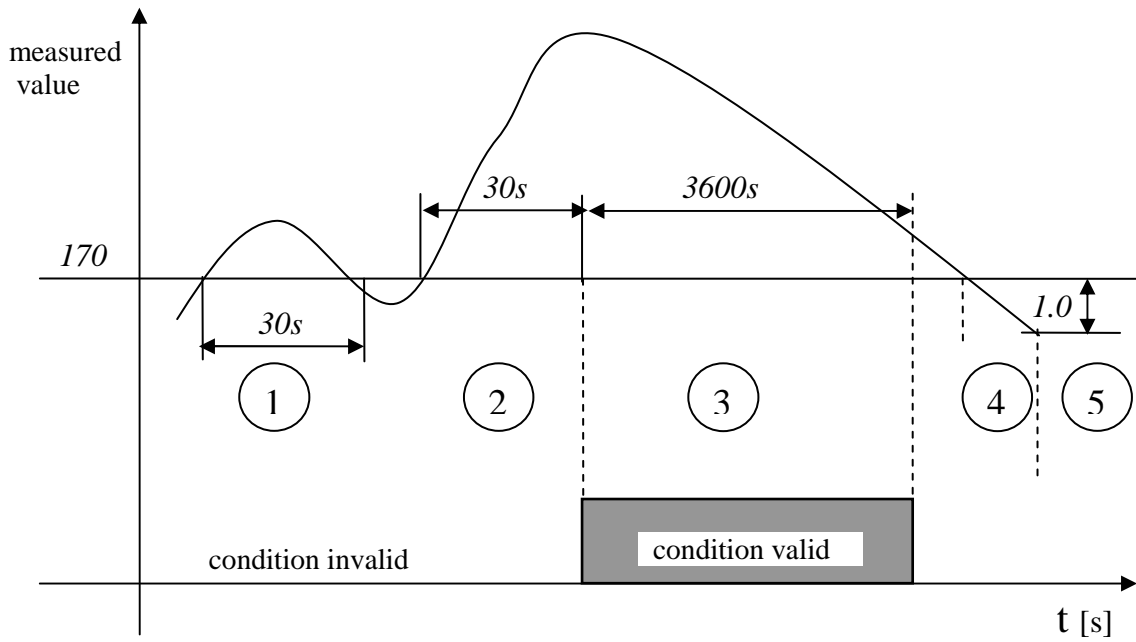
- Combination of condition validity termination with hysteresis OR after specified delay

Condition 1

Start of validity:  >  °C for the duration of  s

End of validity:  value returns back with hysteresis  °C or   expires  s

In the case of input error (measured value is not available):



To renew validity of condition measured value first must drop below specified limit and then to exceed the limit.

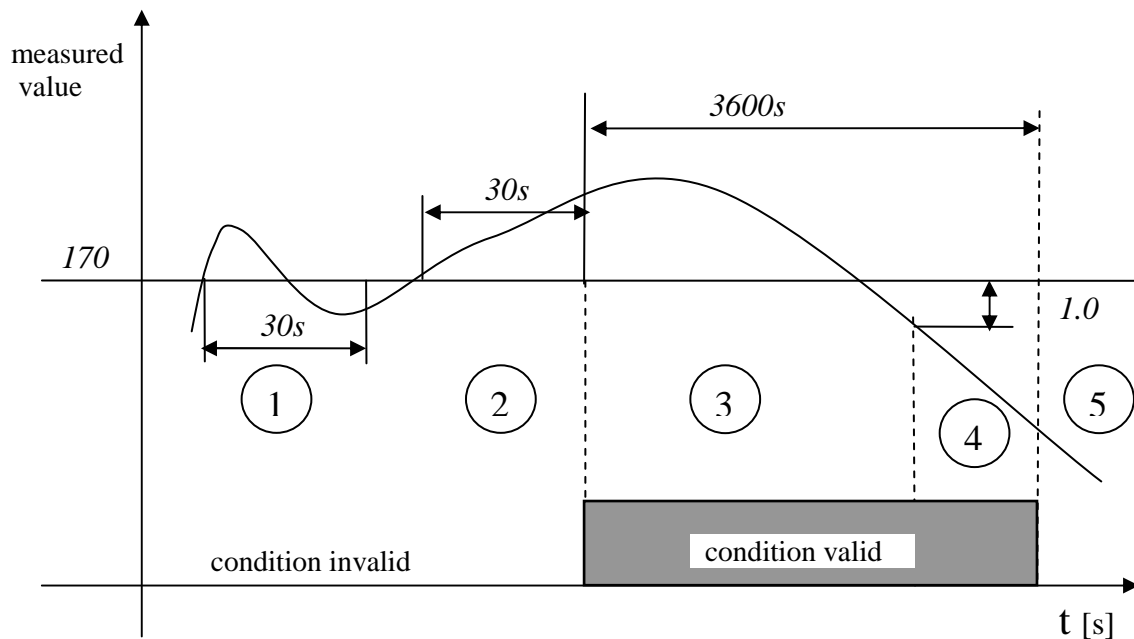
### Combination of condition validity termination with hysteresis AND after specified delay

Condition 1

Start of validity:  >  °C for the duration of  s

End of validity:  value returns back with hysteresis  °C together with  expires  s

In the case of input error (measured value is not available):



B) if there is a need to control validity of condition only by date, time and day in the week, use selection **Valid in time interval**

*Example:*

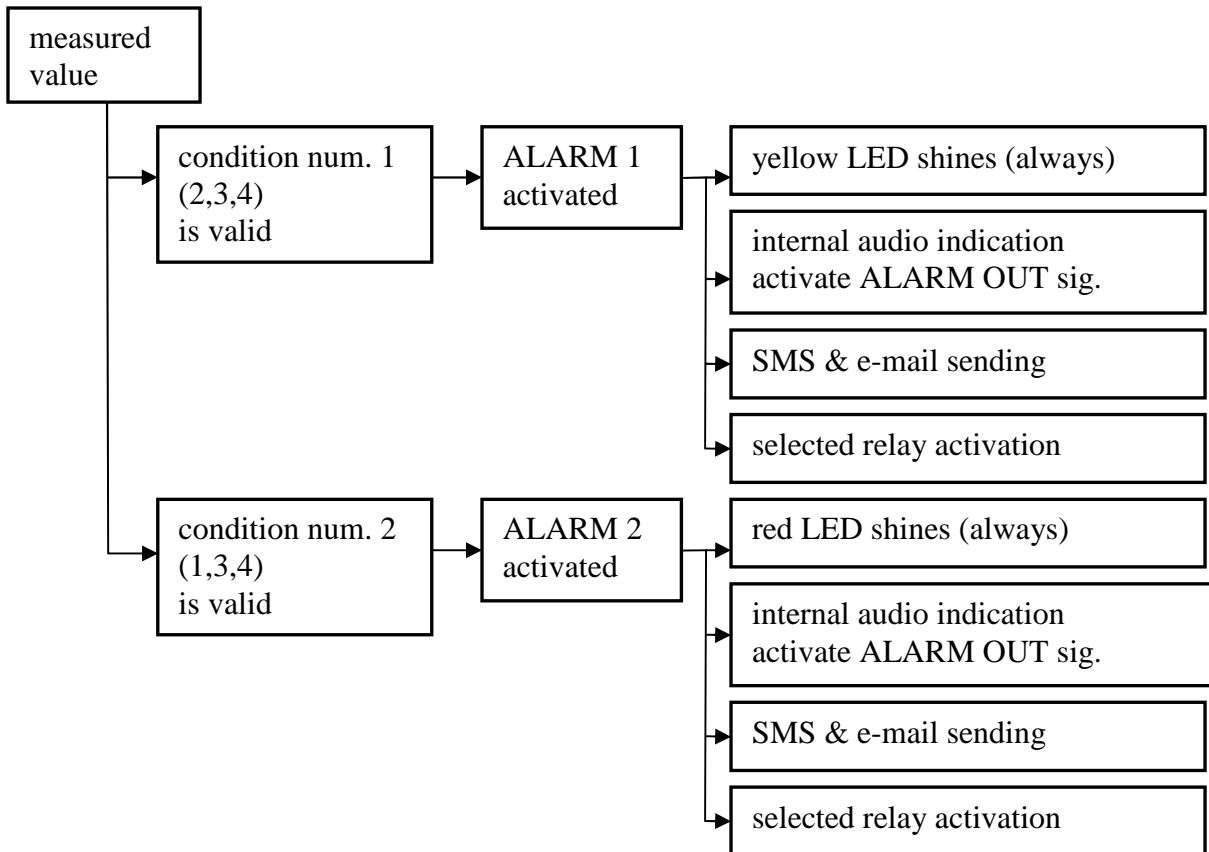
C) if there is a need to control validity of condition directly from computer, use selection **Set remotely from PC**. In this case authorized access by user PIN code entering is enabled (if using *Administration of users and passwords*).

*Example:*

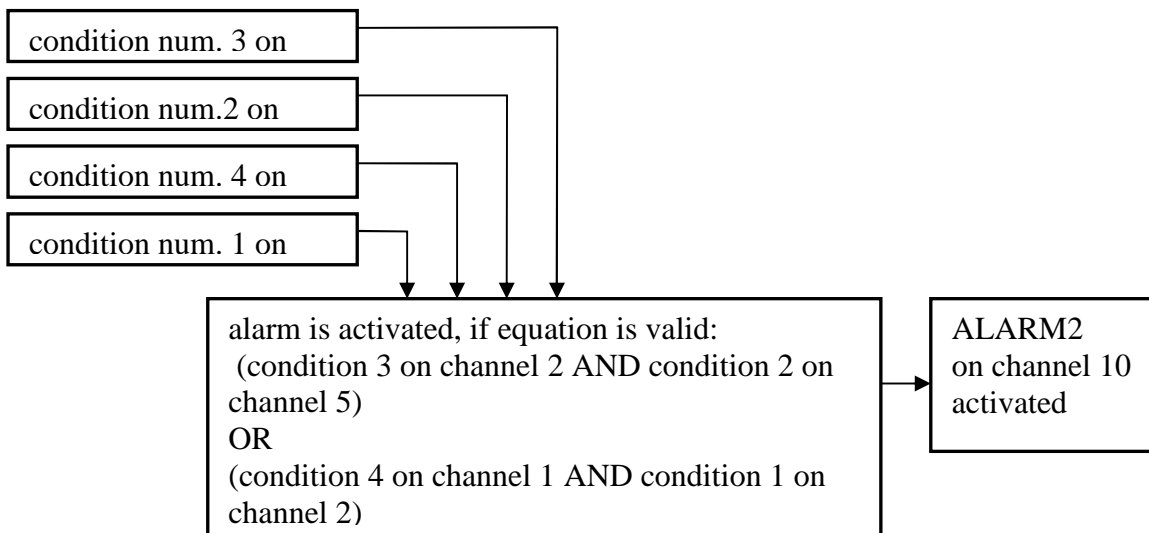
### 5.7. Bookmark **Ch..Alarms and indication**

Two alarm states for each channel are enabled to define. Several actions are enabled to assign to each alarm. Alarms are defined based on validity of *Conditions* or based on logical *Combinations of conditions* (maximum four conditions from different channels).

Wiring diagram of possibility of alarm states creation and associated actions:



Example of alarm creation at used logical combination of conditions:



Alarm is active, if input conditions are valid. By means of combination of conditions you can solve also complex situations including remote control. Some actions last during all alarm time (audible indication, ALARM OUT output activity, visual indication, relay closing), other actions last only at the moment of alarm creation (SMS message, e-mails).

## **6. CONTROL and INDICATION COMPONENTS of DATA LOGGER**

### **6.1. Indication of power and state of output ALARM OUT**

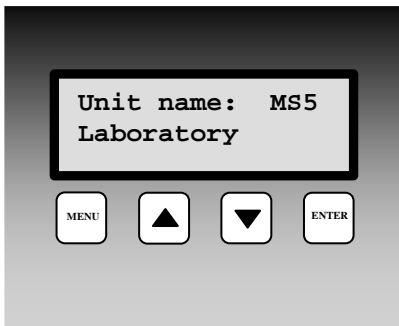
Indication is performed visually by LED diodes located at case side next to power terminals (*see Drawing*). Green LED indicates the presence of power voltage, red LED activity of output ALARM OUT.

### **6.2. Display and keyboard (only for models equipped with this accessory)**

Left from display are three indication LED diodes:

- Power - indication of presence of power voltage
- Alarm - indication of activity of output ALARM OUT. Its function is identical to LED from case side
- Error – lights, if configuration violence of data logger appears or error in self test appears

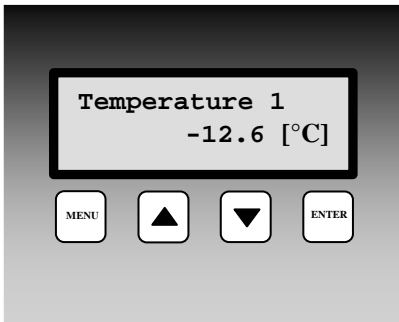
Display is dual line, display can be controlled by means of four button keyboard located next below it (buttons MENU,▲,▼,ENTER). After connection of data logger to power self test of several internal voltages is performed first. If everything correct, data logger starts to display values.



#### **Display after connection power to data logger.**

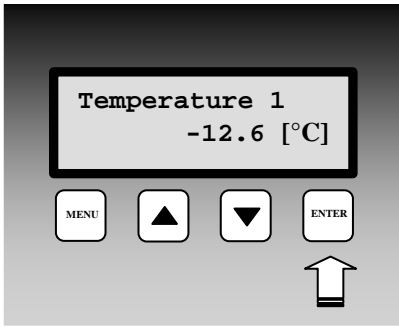
Datalogger model and name is displayed for several seconds.

Then data logger evaluates self test of internal voltages. If everything correct, data logger starts to display values. If self test is not correct, data logger reports Self Test Error with specified voltage, which is not correct (power voltage, internal battery and source of negative voltage). The failure is necessary to fix. If specified error message is confirmed by pressing ENTER key, data logger goes on to basic display.



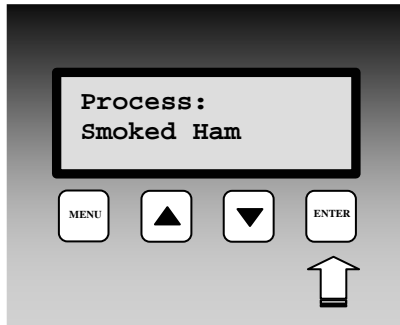
#### **Basic display on the LCD**

In basic display upper line displays user specified name of measuring point, adjusted from user program. Lower line displays measured value with physical unit respective state of input channel. All active channels can be checked by keys ▲,▼. Error message can occur instead of measured value. Binary inputs display at the whole LCD bottom line user defined description of state closed/open. In case value is not available or is not correct error message is displayed – see Appendix 7.



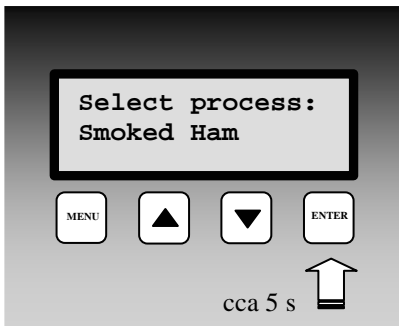
**Deactivation of audible alarm and output ALARM OUT by pressing ENTER key**

If this function is enabled, then in basic display of measured values short pressing of this key deactivates audible indication and ALARM OUT output. In case another alarm appears with requirement for audible indication, alarm is activated. Similarly, if data logger deactivates alarm, which activated audible indication and consequently this alarm appears again, it is activated.



**Display of adjusted process**

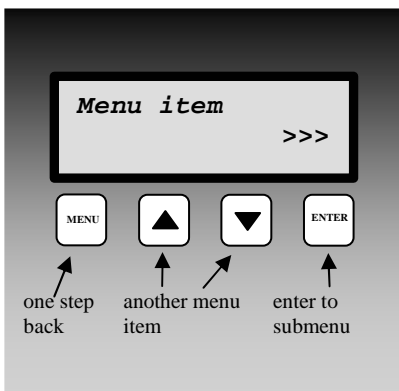
If using *Processes*, shortly press ENTER key in basic display mode on required channel to display actual process in progress.



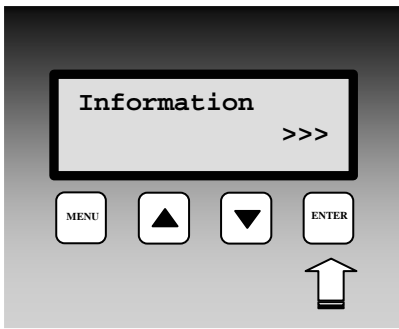
**Selection of new process**

If using *Processes*, press and hold for about 5s ENTER key in basic display to enter selection of preset processes. Use ▲, ▼ keys to go through process names enabled for input channel. If no process is needed use selection No process. Press ENTER key to activate selected process. Press MENU key to leave the display without storing new process.

**Items and function available in Menu data logger**



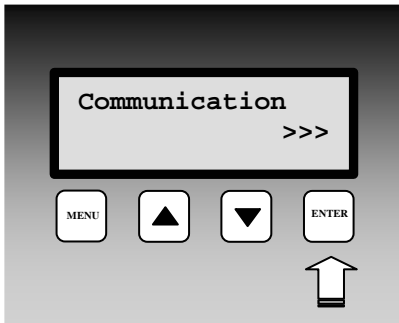
Press MENU key in basic display to enter the data logger Menu. Use ▲, ▼ keys to go through all menu items. Press MENU key to leave menu to the basic display.



### Menu item Information

Item Information contains another Sub-Menu. Press ENTER key to enter sub-menu and use ▲, ▼ keys to move between items. Leave Sub-Menu by pressing MENU key.

In submenu **Information** it is possible to display one fixed message after another Data Logger Model, Data Logger Name, Serial number, Record mode (cyclic/non-cyclic), Memory occupation, Date and time in data logger, Language .



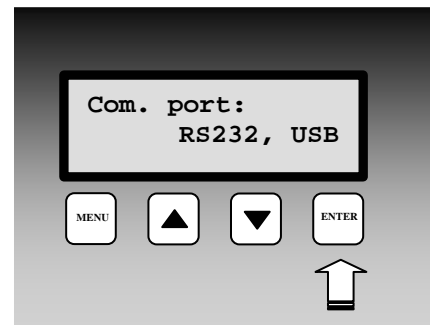
### Menu item Communication

Submenu Communication – enables to display and change Setting of communication interface, Communication speed and Data logger address in the RS485 network. Displayed items in menu depends on actually adjusted communication interface and optionally on implemented HW.

*Change of configuration can be selectable protected by PIN code, entered by the user. Way of entering PIN code is specified in [Application notes](#).*

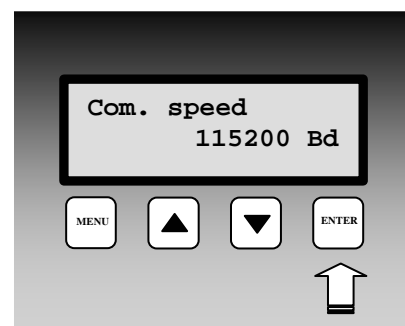
### Change of data logger communication interface

Press ENTER key to enter selection of communication interface. Use ▲, ▼ keys to select required communication interface and press ENTER key to confirm the selection. Adjusted communication interface must correspond with physical connection and with SW configuration. If you choose selection Ethernet, corresponding items in Data Logger Configuration become active.



### Change of data logger communication speed

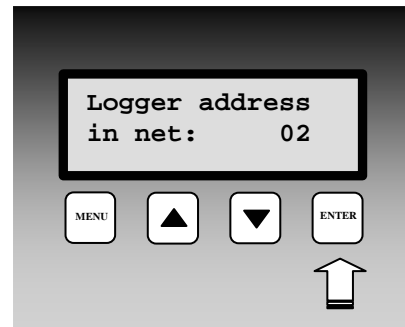
Press ENTER key to enter selection of communication speed. Use ▲, ▼ keys to select required communication speed and press ENTER key to confirm the selection. This selection is not available for some communication interface. ATTENTION – standard computer COM port does not support communication speed 230 400 Bd. This highest speed you can use at USB connection.





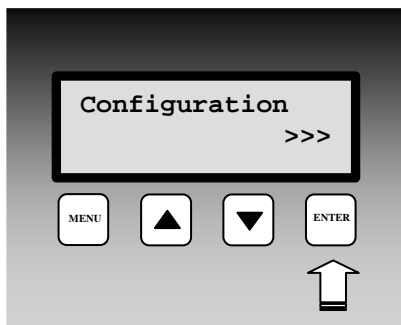
### Change of data logger RS485 address

Press ENTER key to enter address selection. By means of ▲, ▼ keys select new address and press ENTER key to confirm selection. This selection is available only for active RS485 interface.



### Menu item Acoustic signalisation & ALARM OUT

Submenu for switch OFF the audio indication. This item appears **only, if user allowed in Common parameters Alarm Confirmation via menu**. After entering actual states of audio indication and ALARM OUT output are displayed. If in active state, it is possible to deactivate by pressing ENTER key. In case password requirement function is activated in SW, it is necessary to enter password first. *Way of entering PIN code is specified in [Application notes](#).*

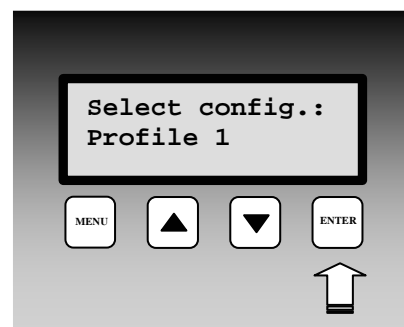


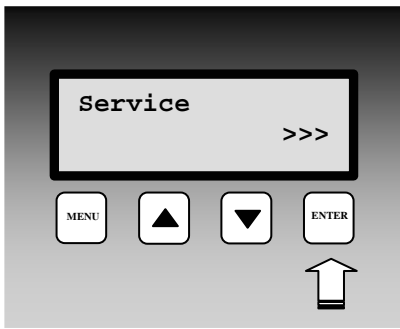
### Menu item Configuration

Submenu enables to set data logger to another predefined configuration – *Profile*. This item of menu is displayed **only, if user enabled in Common parameters administration of Profiles and allowed to change configuration from keyboard of data logger**. *Change of configuration can be secured by PIN code. Way of entering PIN code is specified in [Application notes](#).*

### Change of configuration profile

Press ENTER key to enter selection of configuration profiles. By means of ▲, ▼ keys select new profile and confirm by pressing ENTER key. This action also causes reset of all conditions, which were created or were preparing to be created.



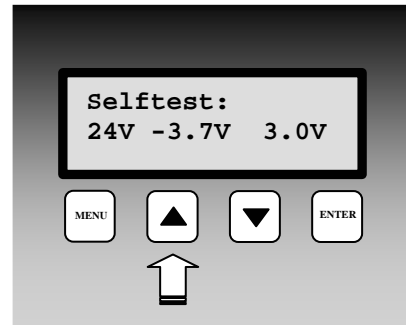


### Menu item Service

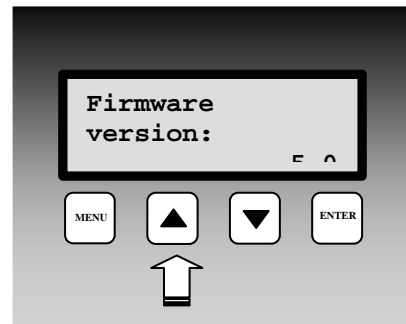
Submenu enabling to display value of some Service parameters of data logger.

#### Service – display of self test of internal voltages

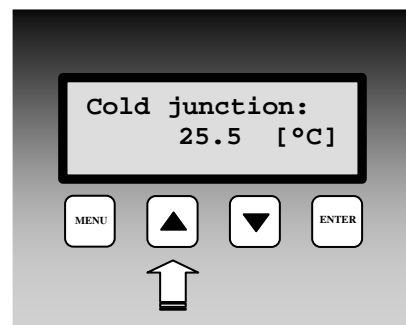
Self test of data logger internal voltage. First value indicates approximate power voltage (9 to 30 V, see technical parameters). Second value is voltage of negative source (-2V to -6V) and third value is voltage of internal back-up battery (2,6V to 3,3 V).



#### Service – display of firmware version

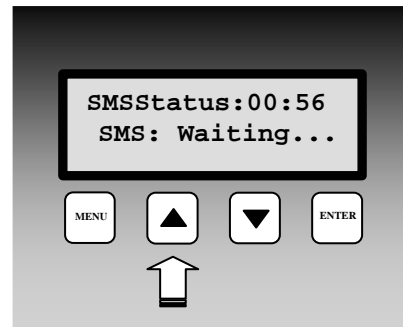


#### Service – display of cold junction temperature of thermocouple



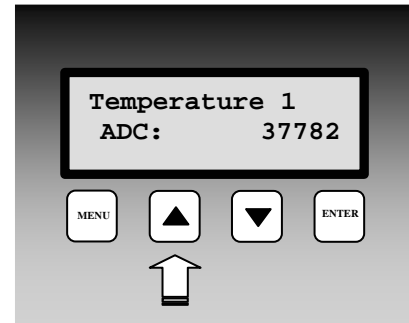
### Service – display of state of processing SMS

Actual state of communication with GSM modem is displayed on the LCD. Press ENTER key to enter directly the display of receiving and sending SMS buffer.



### Service – display of A/D converter values for measured channels

Value read from A/D converter of analog inputs at range 0 to 65535. Limit value 0 indicates converter lower limitation (corresponds to Error1) and value 65535 (corresponds to Error 2) indicates converter upper limitation. With counter inputs binary state of counter is displayed. With binary inputs state of input (ON/OFF) is displayed and with RS input symbols „---“ are displayed.



## **7. APPLICATION NOTES**

### **7.1. Processes and how to work with**

Process is the name of action recorded by data logger in time. User of data logger can enter from its keyboard to each input channel different previously preset names of processes and such way to distinguish in record, which action was performed at that time. Example can be smoke-box for meat. During one working shift different products are processed consequently (names are known before and stored in data logger).

Way of work with processes:

- In configuration of data logger write to *Process label list* all processes (e.g. kind of products) meant for the data logger. Maximum processes is 16 and each process name can contain maximum 16 characters
- select for each channel, which processes will be used (all-some-no). This selection simplifies choosing process (kind of product), when only relevant processes will be offered for the channel.
- at the beginning of the process (e.g. after inserting one kind of product to the meat smoke-box) user finds the desired input channel and presses and holds ENTER key on the data logger keyboard. The name of the first process is displayed. By means of arrow keys preset name corresponding with the product can be selected. By pressing ENTER key again this process in data logger will be activated.
- when the operation is finished and user requires another process (e.g. another kind of product is inserted to the meat smoke-box), it is activated in similar way. Optionally no process is assigned.
- after recorded data download to the PC each time section of the record will be described with name of process, which was active in specified time
- by short pressing of ENTER key on data logger it is possible to display actually active process

Using of Processes is not possible with binary channels (S, SG, S1).

### 7.2. *Configuration Profiles and how to work with*

Configuration Profiles are designed for applications, where it is required data logger is portable and quick change of configuration is enabled without necessity to erase actual record and without necessity to use computer. User stores required Configuration Profiles to data logger in advance. Maximum number of Configuration profiles is 20, minimum number is 6. Each Configuration profile has its name defined by the user (12 characters).

Profile management– enables user to work with several predefined configurations of data logger and change them.

Enable profile change from datalogger keyboard – data loggers with display enables to swap each Configuration Profiles from data logger keyboard without necessity of connection to the computer.

*If administration of profiles is active, then after reading of data logger configuration always window with list of existing profiles appears first enabling to create new, edit or remove actual profile. Before storing of edited profile or removing profile erasing of all measured data is necessary. So optional data download to the PC is useful before erasing.*

### 7.3. *SMS message and how to work with*

If data logger is connected to modem with support SMS function, it is possible enable the following action:

➤ response on incoming SMS queries, when following possibilities exist:

- a) **Info** – if SMS is sent to modem with this text (both capital/lower-case letters are allowed), SMS response is received containing basic information on data logger (type, name, memory occupation, channel names, measured values and alarm states). This SMS can consist of up to four partial SMS messages depending on configuration of data logger. One long SMS can be displayed on mobile telephones with support of long SMS.
- b) **Alarm** - if SMS is sent to modem with this text (both capital/lower-case letters are allowed), SMS response is received containing basic information on data logger (type, name) and channel numbers in active alarm states.
- c) **Ch1** - if SMS is sent to modem with this text (both capital/lower-case letters are allowed), SMS response is received containing basic information on data logger (type, name), channel 1 name, actual measured value and alarm state at channel 1. For other channels enter corresponding number (e.g. Ch11 for channel 11).

➤ sending of SMS with alarm report - in case alarm at one of input channels appears, data logger can activate modem and send SMS message. Up to four telephone numbers are enabled to enter to common parameters for each profile. It is possible to select for each alarm at each channel to which telephone number SMS message will be sent. If alarm state of measured value appears, data logger sends SMS in above format **Alarm**. If critical state in data logger appears, one SMS is sent with specification of data logger type, name and names of critical states (error of configuration, measurement, selftest or memory occupation limit).

*ATTENTION – always set corresponding time delay (minimum of 1 minute is recommended) and non-zero hysteresis for sending SMS. It will prevent possible frequent sending of SMS in states close to alarms.*

More detailed information on support of SMS messages are in *Appendix 8*.

### 7.4. *Possibilities of setting Logging interval*

Logging interval is for each record mode (continuous, conditional) and for each channel individually selectable. These intervals are available: 1s, 2s, 5s, 10s, 15s, 30s, 1min, 2min, 5min, 10min, 15min, 30min, 1h, 2h, 3h, 4h, 6h, 8h, 12h, 24h. Storing is performed always in whole number multiples of above intervals. E.g. if data logger is switched on at 5:05 and the interval is set to 1 hour, first data are stored at 6:00, next

at 7:00 etc. Additionally to above logging intervals record is enabled also in alternative daily time. Maximum of four alternative logging times can be defined for entire data logger. For each channel is possible to select from them.

Note: *Data logger measure one channel after another. Measurement of one channel takes approximately 80 ms. It means if all 16 channels are active, the total measurement time is about 1.3s. This is important with shortest logging intervals.*

### **7.5. Identification of person, who deactivated alarm**

- switch on administration of users and passwords (including encryption of communication)
- define PIN code for each user in part *Users and password* and switch on *Alarm confirmation with PIN*
- switch on *Confirmation of alarm signalisation protected by user PIN*
- check if *Confirmation of alarm signalisation by menu* is switched ON and by *enter key* is switched OFF.

### **7.6. Way of entering PIN code from data logger keyboard**

Data logger can work with two kinds of PIN codes:

- PIN codes related to particular user names and used to cancel alarm and for remote setting of conditions - maximum 16 PINs
- PIN code designed only for protection of data logger configuration against undesirable changes from data logger keyboard. This code is only one for all secured selections and has no relationship with *Administration of users and passwords*.

Way of entering PIN code:

- on data logger LCD is displayed requirement Enter PIN and four asterisks
- by means of arrow keys enter first (highest digit) and press Enter
- after entering the last digit and pressing button Enter validity of PIN code is checked. If valid editing of selected item is allowed
- if you make an error in entering code, press several time button Enter to get back to the beginning of entering PIN code and repeat the whole action

### **7.7. Sharing of Display mode on several computers together with automatic storing of data on network**

- Optional SW version is required
- On the computer connected to data logger set in operation system After Start user program of MS monitoring system.
- Run program and in menu File – Options on bookmark Folder and data files enter path to server where data will be stored.
- At bookmark Display tick Run at program start and tick below Remote www access. Note specified computer name or IP address.
- At bookmark Automatic download select day and hour of data download, optionally other selections and confirm window.
- Check in menu Configuration- Communication settings, if for the data logger automatic data download is allowed – "A" must be ticked next to data logger name (if not, tick via Modify button).
- Restart the computer. A while after user MS program would run with Display mode.
- Go over another computer and in internet browser to the Address filed enter computer name you have noted before. You would see www pages with actual measured values.

### 7.8. How to ensure alarm report, in case of power failure

Data logger can be set in the way relay of ALARM OUT output will be closed in the state without alarm and will only open in the alarm state. Such inverse configuration can be set in service menu of the SW. Then it is sufficient to back up with batteries only suitable alarm dialer (e.g. telephone dialer) and state without power for data logger will correspond with alarm state, which causes alarm report to the user.

### 7.9. Back-up of data logger configuration and its restoring

If there is a need to back up data logger configuration to the computer and have the possibility to upload the configuration to the same or another data logger, read record from data logger. Stored file on disk contains among others also complete configuration of data logger. If you use selection in menu *Configuration – Reading configuration from file*, you can display this configuration and store to the connected data logger. If connected data logger has different serial number from numbers stored in file, this number and some other items related to particular board will not be overwritten. The rest of configuration is stored to the data logger.

### 7.10. Other possibilities in data logger configuration

Some settings are not accessible to usual users and are designed for qualified user. The work is described in special *Service manual*. It concerns especially the possibility to change and add input modules, to configure some HW peripherals, options of configuration for SMS transfer including diagnostic tools.

### 7.11. What to do if data logger does not work

- Does the LED diode light on power source? – if not then there is no mains voltage or the source is faulty or the fuse is broken (then the cause can be in data logger). Check connection of power to data logger. If the fuse breaks after source plug in mains disconnect all terminals and connectors except power from data logger and try again. If it works connect cables one after another and try to find the failure.
- Does the LED diode light on power source? - if not replace fuse in data logger. Use the same type!
- If the LCD display is off and data logger does not communicate probably qualified repair will be necessary.

### 7.12. Self test error

If self test is not OK, data logger after switching ON reports self test error with specification of incorrect voltage (power voltage, internal battery and negative source voltage). If error in Ucc, try to measure the power voltage on data logger. It is necessary to fix the failure. If sending of SMS message in selftest error is set, use suitable delay, e.g. 30 s.

### 7.13. Problems with correct measurement

- Data logger measures incorrectly at some inputs:  
*Disconnect all inputs and let connected always only one and watch values on data logger. If correct then problem can be in cabling or in input device (incorrect connection, undesirable loops).*  
*Typical values on display when current loop is open (4 to 20) mA with inputs A0 and A1 for several selected input ranges:*

Assignment of input value for current 4 to 20 mA in user calibration	measured value by data logger if current loop is open
-30 to 60	-52,5 or Error1
-30 to 80	-57,5 or Error1
-50 to 30	-70,0 or Error1
0 to 150	-37,5 or Error1
0 to 100	-25,0 or Error1

Message Error2 with current loops indicates exceeding of current 20 mA

Data logger works, as some input channel does not exist, although it is installed:

*Check if input channel is switched ON or optionally if input module is installed.*

Data logger time from time and totally irregularly indicates totally incorrect value:

*Failure shows nonsensical value in record, on the display and short alarm activation. Most probably it is caused by electromagnetic interference. Effect is typical if correct rules for installation are not followed. It is necessary to check cabling, to change cable routing, to try to reduce interference etc. Most often this effect appears with current loops powered from A0 module, which are connected to transducers of resistance sensor to current, if resistance sensor shielding is not connected properly or shielding is perforated to ground of other devices. Adjust suitable alarm delay  $t_{ON}$  (see setting conditions) in risky installations. Also faulty probe or transducer can cause such troubles.*

Audio alarm indication of data logger does not work:

*Check if Audio alarm indication is switched ON. Also check if alarm delay  $t_{ON}$  (see setting conditions) is adjusted and wait for this time. Check if alarm in audio indication is not deactivated by pressing ENTER key (try to active other alarm, to activate the audio indication). Also check the connection of external audio indication unit.*

#### **7.14. Problems in communication with computer**

- For trouble free communication with computer use only one from communication interfaces of data logger (RS232, USB, RS485 or Ethernet) and the rest let not connected!

Data logger does not communicate (via RS232 with delivered cable):

*Try to find if problem is in data logger or in computer. Always use delivered cable RS232 (simplified communication). Most frequent problems can be: too high communication speed (19200 Bd would work always), device conflict, e.g. COM1 port interruption is used by internal modem, which is at COM3 port (same is valid for relation COM2-COM4), or network card is set to same interruption, as desired COM port (or other device). Also some resident programs can cause problems.*

Data logger communicates via RS232, but does not communicate via RS485:

*First check cabling, correct connection of link polarity, correction of connection of converter RS232/RS485 including jumper and connection of its power. If several data loggers are connected, let only one in the network (disconnect others by unplugging connector) and try communication. If correct, the cause can be address conflict, improper speed of communication or short circuit of the link. If using converter RS232/RS485 - type E06D or AUT485, always set communication device to selection S with automatic direction switching. Communication could not work with each type of converter RS232/RS485. If user uses other type than recommended, problem can be in its dynamic parameters. Also try other communication port and recommended type of converter.*

- Data logger does not communicate via Ethernet  
Set communication interface RS232 from the data logger display, disconnect Ethernet cable from data logger and connect data logger to the computer via RS232 cable. If communication works properly, proceed in accordance with Appendix 9. If does not work probably service check will be necessary.

## **8.RECOMMENDATION FOR OPERATION AND MAINTENANCE**

### **8.1.1 Operation of data logger in various applications**

Before application it is necessary to consider if data logger is suitable for required purpose, adjust optimal configuration and create instructions for its periodical metrological and functional verifications.

Unsuitable and hazard applications: data logger is not design for applications, where failure of operation could cause endanger of health or function of other device supporting life functions. In applications, where failure of data logger could cause loss on property, it is recommended to amend system of independent indication device to monitor this state and avoid damages. It concerns especially control and indication outputs of data loggers. In critical applications it is suitable to power data logger from backed-up sources (UPS) dimensioned to required operation without mains power. Furthermore critical can be data logger connection to power itself. *It is not suitable to power both data logger and critical device – e.g. freezing box – to one fuse. If fuse is disconnected, then neither data logger nor monitored device is working.*

Location of temperature transducers: locate them to places with sufficient airflow and where most critical point is supposed (in accordance with application requirements). Transducer must be located sufficiently inside of measured room or be connected to, to avoid thermal influence of leading wires to measured temperature. *In monitoring of temperature in air-conditioned room, do not locate transducer to direct flow of air conditioning unit. E.g. at large chamber refrigerators can be temperature profile very inhomogeneous, deviations can reach up to 10 °C.*

Location of humidity transducers: in measuring of humidity in refrigeration boxes without additional humidity stabilization, strong changes of humidity can occur in switching on/off the refrigeration (up to tens of % RH) even though mean RH value is stable.

Optimum data logger operation: it depends on particular application. Important is the setting of logging and alarm parameters. It is necessary to take into account the memory capacity of data logger and frequency of data transfer to the computer. Select logging mode depending on preferable way of data management. If newest data are preferred select cyclic mode, if oldest data are preferred, select noncyclic mode. Further more consider if data will be erased from data logger after data transfer to the computer. In case data will be erased, then a long-term record is not stored in one file and it is not possible to identify eventual failures. In case memory is not erased, then data transfer duration to computer can be a problem. If there are problems with data logger, it is recommended not to erase data. Alarm delay and hysteresis settings are very important.

### **8.1.2 Recommendation for metrological verification**

Metrological verification is performed in accordance with application requirements specified by the user. One year the manufacturer recommends periodical verification.

Notice: *accuracy of data logger input means accuracy of input itself without probes.*

In verification of thermocouple inputs it is necessary to take into account that cold end compensation is perform inside of data logger, where temperature is mostly slightly higher than ambient temperature on the outer connector. Best way is verification together with connected thermocouple.

### **8.1.3 Recommendation for periodical verification**

Manufacturer recommends periodical verification of the system yearly. Interval and range of verification depends on the application. In stationary installations following verification is recommended:

1. Metrological verification
2. Regular overhaul in intervals accordingly to corresponding standards
3. Evaluation of all problems from the last verification
4. Visual inspection of data logger
5. Functional verification of data logger (functions used in application):
  - A) verification of data transfer to computer
  - B) verification of alarms – change input value to activate alarm and check on display and also in external audio indication (if used)
  - C) evaluate in data logger if relay contacts live
  - D) evaluate internal battery – third value in self test must be at least 2.6 V



6. Verification of cabling – check the connection quality of cables, check visually entire cable length for damage and the route of cables for interference, especially whether some parallel power wires are not near.
7. Visual inspection of transducers for possible interference or water penetration.  
Make a verification protocol.

#### **8.1.4 Recommendation for service**



Service of data logger is made at manufacturer or authorized partner. There is no service allowed without authorization from manufacturer. Unauthorized encroachment leads to loss of all warranty. *The most common damage due unauthorized manipulation with input modules is damage of the motherboard, when modules are connected in improper way.*

#### **8.1.5 Placing out of operation after end of device life**

Disconnect the power cord and return data logger to the supplier or specialized company. Notice: *data logger contains back-up Lithium battery on motherboard and on each counter input module (CTU, CTK)*

## **9. TECHNICAL DESCRIPTION AND PARAMETERS OF DATA LOGGER**

### **9.1 Circuit concept of data logger**

Data logger is designed as autonomous complex controlled by its own microprocessor, which fully works if power voltage is connected. If power voltage is not present, data logger does not work, but recorded data and internal time are saved. Exception is with counter inputs CTU and CTK, which internal counter works even in case of switched OFF power of data logger.



Each input module is replaceable. Due to the possibility of data logger damage in incorrect manipulation with modules it is not allowed to manipulate with modules to unauthorized persons.

Input signals are connected by means of 2x24 pin dual part terminals. Part with connected leads can be taken out from data logger.

#### **Not allowed manipulation and warning**



Power source is a device connected to electric mains and if it is damaged including power cord there is danger of injury by electric current. It is not allowed to connect it to mains, if power cord is damaged or if its cover is damaged or removed. It is also not allowed to place it in humid and dangerous environment (e.g. bathroom etc.), at points exposed to direct sun radiation and other thermal sources, to prevent damage and deformation of the case. Data logger should not be operated with not protected terminals if dangerous voltage is connected. Galvanic isolation is not designed for protection from electric current injury. In those cases it is necessary to apply additional isolation modules (e.g. measuring transformers). With this data logger operation of input modules with higher input voltage than is 50V AC / 75V DC is not allowed.

### **9.2 Technical parameters of data logger**

#### **9.2.1 Power**

Data logger is powered from mains 230V 50 Hz by means of external ac/dc adapter or from other suitable DC source.

<b>Power of data logger</b>	
Power voltage:	24 V DC <sup>(2)</sup>
Maximum consumption:	25 W <sup>(1)</sup>
Recommended power source:	ENCO NZ 21/25/1000
Protection:	tube fuse F2A on mother board

<sup>(1)</sup>It concerns maximum consumption with 16 inputs of A0 type with short circuited input terminals. These input modules contain source for powering of current loops of connected transmitters and are capable to supply to short circuit approximately 25 mA/input. With power 24V this additional power loss is approximately 10 W. For more details see Appendix 1.

<sup>(2)</sup>Detailed information on power voltage for data logger and current consumption is specified in Appendix 1.

#### **9.2.2 Output relay module for data logger**

Module contains 16 mains relay with switching-over contacts connected to self-locking Wago terminal on the module. Each relay has three terminals available.

Maximum voltage on the contact:	250 V AC
Maximum current through the contact:	8A
Maximum switching power:	2000 W
Mechanical life of relay contact:	3 x 10 <sup>7</sup> cycles

Electric life of relay contact:	1 x 10 <sup>5</sup> cycles
Material of contact:	Ag Cd O
Maximum wire cross section in terminal:	1,5 mm <sup>2</sup>
Dimensions	140 x 211 mm
Mounting	MP019 on DIN rail 35mm or MP013 holders

\*... Pay attention to all required safety rules in mounting and during operation!

### 9.2.3 Output ALARM OUT

This output is designed especially for connection of external audio indication or telephone dialer. Way its activation can be programmed in data logger configuration. Output is available both in voltage version and as galvanically isolated relay contact.

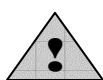
Parameters of output ALARM OUT in activation:	approximately 4.8 in DC, maximum 50 mA
Parameters of inactivated output:	0V, no load allowed
Connection:	terminal Wago
Length of connection cable:	maximum 100 m, only at indoor environment
Used relay	250 V AC/ 8A
Maximum connectable voltage on relay and current	50 V AC/ 1A

Galvanic isolation is not designed for safety function (not sufficient isolating distances). The case of external audio indication is designed for wall mounting and the connection is by means of connector CINCH (outer contact – GND, central pin – ALARM OUT).

### 9.2.4 Communication interface

Each data logger is equipped with interface RS232C, RS485 and USB. Ethernet interface is optional. Communication interfaces are mutually connected internally and as one functional unit galvanically isolated from other data logger circuitry.

<b>RS232C:</b>	Used signals:	RxD, TxD, GND RTS-CTS selectable from SW
	Galvanic isolation:	electrical strength 500 V DC
	Connector:	DSub 9 male, signals DTR-DSR are connected
<b>RS485:</b>	Maximum cable length:	10 m, only in indoor environment
	Input impedance:	approximately 12 kΩ
	Galvanic isolation:	electrical strength 500 V DC
<b>USB</b>	Connection:	dual terminals
	Maximum cable length:	1200 m in indoor environment
	Compatibility:	USB1.1. and USB 2.0
<b>Ethernet</b>	Connector:	USB type B
	Vendor ID:	0403
	Product ID:	6001
	Compatibility:	10/100 MBit Ethernet
	Connector:	RJ45



Galvanic isolation is not designed for safety function - protection against electrical current injury!

---

the way of communication

---

Setting of communication	serial link, 1 start bit, 8 data bits, 1 stop bit, without parity
--------------------------	---

---

communication speed	1200 Bd, 9600 Bd, 19200 Bd, 57600 Bd, 115200 Bd, 230 400 Bd *
---------------------	---

\*... speed 230 400 Bd may not be supported from computer side (standard COM port RS232 supports maximum 115 200 Bd)

Optional serial interface for reception and sending SMS message:

<b>RS232/B</b>	Used signals:	RxD, TxD, GND RTS-CTS selectable from SW
	Galvanic isolation:	galvanically not isolated from data logger internal circuitry
	Connector:	DSub 9 male
	Maximum cable length:	10 m, only in indoor environment
	Format of transfered data:	1 start bit, 8 data bits, 1 stop bit, without parity
	Communication speed	1200 Bd, 9600 Bd, 19200 Bd, 57600 Bd, 115200 Bd

### 9.2.5 Real time clock circuitry

Contains actual data with seconds, minutes, hours, days, months and years. Circuitry works even if data logger is disconnected from power.

Error of time value:	maximum 255 ppm $\pm$ 5 ppm/year at temperature 23°C $\pm$ 10 °C
----------------------	--

### 9.2.6 Internal battery

Serves to back-up recorded data and to power of real time clock (RTC) in case, data logger is not connected to power.

Type of battery:	Lithium 3V, VARTA CR ½ AA
Estimated life:	10 years from date of production of data logger

### 9.2.7 Electromagnetic compatibility

Device is tested in accordance with EN 61326-1: 2006 article 6 table 1

radiation:	EN 55022 A1, A2: class B
immunity:	EN 61000-4-2: class and (4/8 kV)
	EN 61000-4-3: class and (3V/m)
	EN 61000-4-4: class and (0,5/1 kV)
	EN 61000-4-6: class and (3 V)

### 9.2.8 Operating condition

Outer influence accordingly with EN 33-2000-3: normal environment

Operating temperature:	(0..50) °C
AC1	altitude up to 2000 m above sea level
AE1	influence of other elements negligible
AM1	influence of radiation negligible
AN1	influence of sun radiation negligible
BA4	qualification of persons – knowledgeable
BE1	materials without fire danger in the object

---

Settling time after switching ON: 15 minutes

---

### 9.2.9 Storing condition

---

Storing temperature:	-10 to +70 °C
Relative humidity:	5 to 95 %

---

### 9.2.10 Mechanical parameters

---

Dimensions of the case:	215 x 165 x 60 mm without connectors and without mounting consoles 215 x 225 x 60 mm with DSub connectors with covers
Weight:	approximately 800 g
Protection:	IP20
Input terminals:	removable, maximum cross section of lead: 1.5 mm <sup>2</sup>
Mounting:	desk top – standard version by means of two mounting consoles – optional accessory by means of DIN rail 35 mm holder – optional accessory

---

## 9.3 Technical parameters of input modules

Input modules are designed as individual replaceable units plugged in sockets behind connection terminals of input channels. Manufacturer does not recommend to replace modules by unskilled personnel.

Each input module is adjusted to fixed maximum measuring range, where it works correctly in specified limits of accuracy. Input modules contain part of protection circuitry, circuitry for signal unification and memory with stored calibration and configuration constants. With galvanic isolated inputs optical isolation of the signal by analog operational amplifier is used. User is not able to modify configuration of input modules. If needed user can recalculate measured value to desired real value with physical unit by means of a special menu item Recalculations in the PC program.

Galvanic isolated inputs have isolation strength of 500 V. It is not tested as safety isolation, see Not allowed manipulations and warning.

### 9.3.1 Input modules for measurement of dc voltage and currents

These input modules are available in version without galvanic isolation or as galvanic isolated (with the exception of A0 input). Input with galvanic isolation is marked by additional letter G behind its type name.

Time response to step change of input signal is negligible referred to logging interval (1 s).

---

#### Input module type A0

---

Measured value:	dc current, se source two-wire connection transmitters powered from current loops
Range:	(4.. 20) mA
Accuracy:	0.1 % from range ( $\pm 0.02$ mA)
Current in short circuit of input terminals:	limited to approximately 25 mA
Voltage across open terminals:	voltage source - 3V, at power 24V approximately 21V

---

#### Input module type A1 and A1G

---

Measured value:	dc current
Range:	(4.. 20) mA
Accuracy:	0.1 % from range ( $\pm 0.02$ mA)
Input resistance:	approximately 14 $\Omega$
Overload capacity:	100 % (current $\pm 40$ mA maximum)
<b>Input module type B0 and B0G</b>	
Measured value:	dc current
Range:	(0.. 20) mA
Accuracy:	0.1 % from range ( $\pm 0.02$ mA)
Input resistance:	approximately 14 $\Omega$
Overload capacity:	100 % (current $\pm 40$ mA maximum)
<b>Input module type B1 and B1G</b>	
Measured value:	dc current
Range:	(0.. 1) A
Accuracy:	0.1 % from range ( $\pm 1$ mA)
Input resistance:	approximately 0.04 $\Omega$
Overload capacity:	$\pm 5$ A maximum
<b>Input module type B2 and B2G</b>	
Measured value:	dc current
Range:	(0.. 5) A
Accuracy:	0.1 % from range ( $\pm 5$ mA)
Input resistance:	approximately 0.04 $\Omega$
Overload capacity:	10% (current $\pm 5.5$ A maximum)
<b>Input module type D0 and D0G</b>	
Measured value:	dc voltage
Range:	(0.. 100) mV
Accuracy:	0.1 % from range ( $\pm 0.1$ mV)
Input resistance:	>10 M $\Omega$
Overload capacity:	$\pm 5$ V maximum
<b>Input module type D1 and D1G</b>	
Measured value:	dc voltage
Range:	(0.. 1) V
Accuracy:	0.1 % from range ( $\pm 1$ mV)
Input resistance:	>10 M $\Omega$ for input D1 >400 k $\Omega$ for input D1G
Overload capacity:	$\pm 5$ V maximum for input D1 $\pm 10$ V maximum for input D1G
<b>Input module type D2 and D2G</b>	
Measured value:	dc voltage
Range:	(0.. 10) V
Accuracy:	0.1 % from range ( $\pm 10$ mV)
Input resistance:	>1 M $\Omega$
Overload capacity:	$\pm 30$ V maximum
<b>Input module type D4 and D4G</b>	
Measured value:	dc voltage
Range:	(0.. 75) V
Accuracy:	0.1 % from range ( $\pm 75$ mV)
Input resistance:	>900 k $\Omega$
Overload capacity:	$\pm 100$ V maximum (from safety aspect 75 V maximum)
<b>Input module type D5 and D5G</b>	
Measured value:	dc voltage
Range:	(-10.. +10) V

Accuracy:	0.1 % from range ( $\pm 20$ mV)
Input resistance:	$>1$ M $\Omega$ (D5), $>400$ k $\Omega$ (D5G)
Overload capacity:	$\pm 30$ V maximum

### 9.3.2 Input modules for measurement of ac voltage and current

These input modules are produced always in version with galvanic isolation (without additional marking with letter G). These inputs contain RMS/DC converter, which is designed for measurement of signals with sine course. Specified measurement accuracies below are valid for sine signal with frequency 50 Hz.

#### General parameters of ac inputs

non-sine signal:	symmetric rectangular 1:1	additional error 11%
	symmetric triangle	additional error – 4%
time response $t_{90}$	step from 0 to $\frac{3}{4}$ of range	approximately 2 s
	step from $\frac{3}{4}$ of range to 0	approximately 10 s

#### Input module type C0

Measured value:	ac current
Range:	(0.. 20) mA
Accuracy:	1 % from range ( $\pm 0.2$ mA)
Input resistance:	approximately 14 $\Omega$
Overload capacity:	100% (current 40 mA maximum),

#### Input module type C1

Measured value:	ac current
Range:	(0.. 1) A
Accuracy:	1 % from range ( $\pm 10$ mA)
Input resistance:	approximately 0.04 $\Omega$
Overload capacity:	5 A maximum

#### Input module type C2

Measured value:	ac current
Range:	(0.. 5) A
Accuracy:	1 % from range ( $\pm 50$ mA)
Input resistance:	approximately 0.04 $\Omega$
Overload capacity:	5,5 A maximum

#### Input module type E0

Measured value:	ac voltage
Range:	(0.. 100) mV
Accuracy:	1 % from range ( $\pm 1$ mV)
Input resistance:	$>10$ M $\Omega$
Overload capacity:	5 V maximum

#### Input module type E1

Measured value:	ac voltage
Range:	(0.. 1) V
Accuracy:	1 % from range ( $\pm 10$ mV)
Input resistance:	$>10$ M $\Omega$
Overload capacity:	5 V maximum

#### Input module type E2

Measured value:	ac voltage
Range:	(0.. 10) V
Accuracy:	1 % from range ( $\pm 100$ mV)
Input resistance:	$>1$ M $\Omega$

Overload capacity:	50 in maximum
<b>Input module type E4</b>	
Measured value:	ac voltage
Range:	(0.. 50) V
Accuracy:	1 % from range ( $\pm 0,5$ V)
Input resistance:	>700 k $\Omega$
Overload capacity:	100 V maximum (from safety aspect only 50 V AC)

### 9.3.3 Input modules for measurement of resistance and resistance transmitters

These input modules are produced in version without galvanic isolation or galvanically isolated. Input with galvanic isolation is marked with additional letter G behind its type marking.

Time response to jump change of input signal is negligible refer to fastest sampling interval (1 s).

Modules are produced only for two-wire measurement. Possible error due lead lengths can be corrected by means of user conversions.

<b>Input module type F and FG</b>	
Measured value:	resistance
Range:	0.. user defined range (from 100 $\Omega$ to 1 M $\Omega$ )
Accuracy:	0.1 % from range
Measuring current:	approximately $I = 1.25/\text{range}$ [A, $\Omega$ ]
Maximum voltage on input:	$\pm 5$ V maximum

<b>Input module type J and JG</b>	
Measured value:	temperature from resistance sensor Nickel 1000/ 6180 ppm
Range:	(-50 .. 250) $^{\circ}\text{C}$
Accuracy (without probe):	$\pm 0.2$ $^{\circ}\text{C}$ at range (-50..100) $^{\circ}\text{C}$ , $\pm 0.2$ % from value at range (100 .. 250) $^{\circ}\text{C}$
Measuring current:	approximately 0.25 mA (depends on temperature)
Maximum voltage on input:	$\pm 5$ V maximum

<b>Input module type K and KG</b>	
Measured value:	temperature from resistance sensor Pt100/ 3850 ppm
Range:	(-140 .. 600) $^{\circ}\text{C}$
Accuracy (without probe):	$\pm 0.2$ $^{\circ}\text{C}$ at range (-140..100) $^{\circ}\text{C}$ , $\pm 0.2$ % from value at range (100 .. 600) $^{\circ}\text{C}$
Measuring current:	approximately two mA (depends on temperature)
Maximum voltage on input:	$\pm 5$ V maximum

<b>Input module type K1 and K1G</b>	
Measured value:	temperature from resistance sensor Pt1000/ 3850 ppm
Range:	(-140 .. 600) $^{\circ}\text{C}$
Accuracy (without probe):	$\pm 0.2$ $^{\circ}\text{C}$ at range (-140..100) $^{\circ}\text{C}$ , $\pm 0.2$ % from value at range (100 .. 600) $^{\circ}\text{C}$
Measuring current:	approximately 0,2 mA (depends on temperature)
Maximum voltage on input:	$\pm 5$ V maximum

<b>Input module type K3</b>	
Measured value:	temperature from resistance sensor Pt1000/ 3850 ppm
Range:	(-10 .. 50) $^{\circ}\text{C}$
Accuracy (without probe):	$\pm 0.06$ $^{\circ}\text{C}$
Measuring current:	approximately 0,2 mA (depends on temperature)
Maximum voltage on input:	$\pm 5$ V maximum



---

input:

---

### 9.3.4 Input modules for temperature measurement from thermocouple transmitters

Inputs for measurement of thermocouple (except thermocouple type B) have compensation of cold junction temperature inside of data logger. Compensation *temperature is measured on data logger motherboard between terminals for channel 7 and channel 8*. Value of this temperature is converted to thermoelectric voltage and added to value of thermoelectric voltage measured by thermocouple. Result is converted to temperature again, which is resulting measured temperature. If using thermocouples operate data logger in working position with input signal terminals towards down and do not install heat sources in the neighborhood.

These input modules are produced in version without galvanic isolation or galvanically isolated. Input with galvanic isolation is marked with additional letter G behind its type marking.

Time response to jump change of input signal is negligible refer to fastest sampling interval (1 s).

---

#### Input module type N and NG

---

Measured value: temperature measured thermocouple type K (NiCr-Ni)  
Range: (-70..1300) °C  
Accuracy without probe:  $\pm (0.3 \% \text{ from measured value} + 1,5 \text{ }^\circ\text{C})$   
Cold junction: compensated at temperature range (0..50) °C  
Maximum voltage on  $\pm 5 \text{ V}$  maximum  
input:

---

#### Input module type O and OG

---

Measured value: temperature measured thermocouple type J (Fe-Co)  
Range: (-200..750) °C  
Accuracy without probe:  $\pm (0.3 \% \text{ from measured value} + 1,5 \text{ }^\circ\text{C})$   
Cold junction: compensated at temperature range (0..50) °C  
Maximum voltage on  $\pm 5 \text{ V}$  maximum  
input:

---

#### Input module type P and PG

---

Measured value: temperature measured thermocouple type with (Pt10%Rh-Pt)  
Range: (0..1700) °C  
Accuracy without probe:  $\pm (0.3 \% \text{ from measured value} + 1,5 \text{ }^\circ\text{C})$   
Cold junction: compensated at temperature range (0..50) °C  
Maximum voltage on  $\pm 5 \text{ V}$  maximum  
input:

---

#### Input module type Q and QG

---

Measured value: temperature measured thermocouple type B (Pt30%Rh-Pt)  
Range: (100..1800) °C  
Accuracy without probe:  $\pm (0.3 \% \text{ from measured value} + 1 \text{ }^\circ\text{C})$  at range (300..1800)°C  
Cold junction: not compensated  
Maximum voltage on  $\pm 5 \text{ V}$  maximum  
input:

---

#### Input module type T and TG

---

Measured value: temperature measured thermocouple type T (Cu-CuNi)  
Range: (-200..400) °C  
Accuracy without probe:  $\pm (0.3 \% \text{ from measured value} + 1,5 \text{ }^\circ\text{C})$   
Cold junction: compensated at temperature range (0..50) °C  
Maximum voltage on  $\pm 5 \text{ V}$  maximum  
input:

---

### 9.3.5 Input modules for counting pulses

Counter inputs are designed for counting of incoming pulses (gas meters, electrometers..). Modules contain own processor unit, which registers incoming pulses even if power is switched OFF (module has its own battery for power, if data logger is not switched ON). Record is performed similarly as with analog inputs, i.e. by writing counter value to data memory in adjusted logging interval. Value from counter can be displayed in absolute format or as recalculated, in record it is possible to display relative format as increments in logging intervals. Counter module contains switch-able overshoot filter (fast changes) of input pulses.

---

#### Input module CTU - galvanic isolated counter for voltage signal

---

Capacity of counter:	31 bits, activated by downward edge of input signal maximum value of counter: 2147483647
Input level:	state „L“: 0 to 0,8 V state „H“: 3 to 24 V maximum
Input current:	approximately 7 mA in state „H“
Input frequency:	0 to 5 Hz, length of pulse minimum 200 ms, if Filter is switched ON 0 to 5 kHz, length of pulse minimum 30 µs, if Filter is switched OFF
Galvanic isolated:	500 V, not designed for safety function
Battery life:	minimum 6 months, if data logger is switched OFF

---

#### Input module CTK - galvanic non-isolated counter for potential-less contact

---

Capacity of counter:	31 bits, activated by leading edge of input signal maximum value of counter: 2147483647
Input level:	state „L“: resistance of opened contact >250 k Ohms state „H“: resistance of closed contact < 10 k Ohms
Input frequency:	0 to 5 Hz, length pulse minimum 200 ms, if is Filter switched ON 0 to 5 kHz, length pulse minimum 30 µs, if is Filter switched OFF
Galvanic isolated:	module <b>is not</b> galvanic isolated from other circuitry of data logger
Battery life:	minimum 6 months, if data logger is switched OFF

---

### 9.3.6 Input modules for monitoring of binary event

Binary inputs serve for evaluation of two-state level input signals (contact closed/opened respectively voltage present/not present).

---

#### Input module S and SG - binary input for potential-less contact

---

Input level:	state „L“: resistance of opened contact >100 k Ohms state „H“: resistance of closed contact < 1000 Ohms
Minimum length of input pulse:	200 ms
Galvanic isolated:	only with input module SG: 500 V, not designed for safety function

---

#### Input module S1 - binary input for voltage level, galvanic isolated

---

Input level:	state „L“: 0 to 0,8 V state „H“: 3 to 30 V maximum
Input current:	(1..9) mA .. depending on applied input voltage in state „H“
Minimum length of input pulse:	200 ms
Galvanic isolated:	500 V, not designed for safety function

---

### 9.3.7 Input modules for measurement frequency

Module contains its own processor, processing measured values is identical as with analog inputs.

---

#### Input module FU - galvanic isolated input for measurement of frequency voltage signal

---

Range:	0 to 5 kHz, duration of input pulse minimum 30 µs
Resolution:	1 Hz

---

---

Accuracy:	± (0,2% from reading +1Hz)
Input level:	state „L“: 0 to 0,8 V state „H“: 3 to 24 V maximum
Input current:	approximately 7 mA in state „H“
Galvanic isolated:	500 V, not designed for safety function

---

#### **Input module FK - galvanic non-isolated input for measurement of frequency of contact switching**

---

Range:	0 to 5 kHz, duration of input pulse minimum 30 µs
Resolution:	1 Hz
Accuracy:	± (0,2% from reading +1Hz)
Input level:	state „L“: resistance of opened contact >250 k Ohms state „H“: resistance of closed contact < 10 k Ohms

---

### **9.3.8 Input RS - galvanically isolated input for transmitters se serial output RS485**

This input module contains its own processor unit and serves for reading from intelligent transducers, which support protocol of ADVANTECH format. Only one such input can be installed in data logger. All higher channels up to channel 16, which follow the position, where RS input is installed are automatically directed to input serial RS485 link. That is why, positions for higher channels must remain vacant.

---

Input communication interface:	RS485
Communication protocol:	compatible with ADVANTECH ADAM series 4000
Format data:	Engineering units, check sum switched ON, supported commands: #AA cr (single-input device) or #AA n cr (multi-input device, n .. number of input 0..7)
Address of input device:	must be from interval 1 to 16 (decimal)
Communication speed:	(1200, 2400, 4800, 9600, 19200) Bd
Impedance of input (reception):	approximately 12 k Ohms
Maximum length of cable:	1200 m at indoor rooms
Galvanic isolated:	500 V, not designed for safety function

---

This input can communicate with 1 to 16 devices (respectively measured points). Maximum number of measured points is defined by the position of module in data logger. Module sends command for reading of data from the first transducer, then waits for response. Maximum waiting duration is adjustable up to approximately 500 ms. After expiration of this duration communication error is reported and module continues with reading of the following channel. If device responses in adjusted time, the response is evaluated and module also continues with reading of the following channel.

Note: *more details and the procedure of setting of the module is described in [Appendix 3](#).*